

The background is an abstract composition of vibrant colors and geometric shapes. A large, multi-layered triangle in shades of orange and red is positioned in the upper left. To its right, a large, curved shape in shades of red and orange dominates the upper right. The lower left is filled with a bright green and yellow gradient. A dark, textured band runs diagonally across the center. The overall effect is dynamic and artistic.

# Arts Infusion

## 2025-2026

### PROGRAM & ACTIVITY GUIDE

FOR TEACHERS,  
STUDENTS, AND  
COMMUNITY MEMBERS

PRESENTED BY:  
SALINA ARTS & HUMANITIES

## FOR NEEDED ACCOMMODATIONS,

please call Salina Arts & Humanities at 785-309-5770 between 8:00 am - 6:00 pm Monday-Thursday. Every effort will be made to accommodate known disabilities. For material or speech access, please call at least five working days prior to the event.

# SALINA ARTS & HUMANITIES,

a department of the City of Salina, has served a unique role as an arts advocate and resource partner since 1966. The Smoky Hill River Festival, Horizons Grants Program, Smoky Hill Museum, Arts Infusion Program in schools, Spring Poetry Series, Community Art & Design, and Creative Connections are among the programs of Salina Arts & Humanities, located at 211 W. Iron Avenue in Salina.



GREATER SALINA  
**community  
foundation**

The Greater Salina Community Foundation is an important community partner that provides the resources for many arts and cultural programs in Salina. A variety of the programs and activities in this guide are supported in part through the Foundation and its donors. The Greater Salina Community Foundation is a collection of funds designed to link donors with charitable causes that meet the needs of the Saline County area and neighboring counties such as Cloud, McPherson, Russell, and Ellsworth. The Foundation aims to build a permanent endowment that facilitates prudent management and care of donor funds to enhance quality of life, both now and in the future.



# TABLE OF Contents

**Introduction . . . . . 4**

**Program Overview . . . . . 5**

**Teaching Artist Overview . . . . . 6-7**

**Artists and Agencies . . . . . 8-15**

Drama, Movement, and Music . . . . . 8-9

Social Studies . . . . . 10

Visual Arts . . . . . 11

Science. . . . . 12-13

English Language Arts. . . . . 14-15

**Community Cultural Offerings . . . . . 16**

**Salina Arts & Humanities Resources . . . . 17**

**Public Art in Salina, KS . . . . . 18**



Dear Teachers and Citizens,

Salina is a remarkable community where public and private entities believe in the power of the arts and humanities to improve lives and engage children in creative practices. The Arts Infusion Program's partnership with USD 305 distinguishes Salina as a leader in arts enrichment as part of a balanced education.

Visiting and local teaching artists develop students' abilities in problem-solving, critical thinking, working independently and in groups, using multi-sensory communication skills, and the arts build confidence and self-esteem as creativity is engaged.

Thanks to USD 305 and taxpayers, this guide is filled with opportunities that add to student success. I encourage you to engage with the artists and organizations featured in the guide and enjoy all that is offered.

Sincerely,

Sarah Keck  
Arts Education Coordinator, Salina Arts & Humanities

## WORDS FROM EDUCATORS IN THE COMMUNITY ABOUT THEIR EXPERIENCE WITH 2024-2025 ARTISTS:

"She came prepared, asked thought-provoking questions, helped students with their own discoveries, and engaged with them respectfully and wholeheartedly."

- Salina Central HS Teacher,  
11th-12th grade

"The artist left with our kids writing which was fantastic. Picking right up where she left off was super easy. Would definitely like to have her back again next year!"

- Salina South MS Teacher,  
6th grade

"Loved it! This was a great addition to our classroom curriculum."

- St. Mary's Grade School Teacher,  
2nd grade

"Fantastic-look forward to signing up again for sure!"

- Stewart Elementary Teacher,  
1st grade

"I am able to refer back to his lessons in later classes and make meaningful connections."

- Meadowlark  
Elementary Teacher,  
4th grade

# PROGRAM OVERVIEW

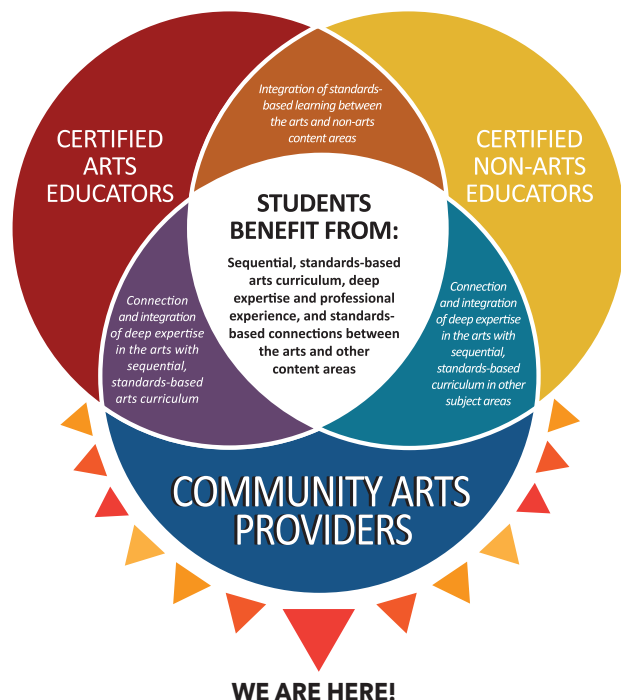
## Arts Infusion

### HISTORY

Presenting the arts in schools has been the foundation of program activity for Salina Arts & Humanities (SAH) since 1966. Currently, Arts Infusion represents a much broader perspective in arts education, with resources extended throughout the district, and with secondary students targeted through artist residencies and opportunities to participate in the larger community's cultural environment.

### OBJECTIVES

- Encourage involvement in the arts as a source of creative expression and personal fulfillment.
- Recruit, mentor, and employ Salina and area professionals as teaching artists in classrooms at all levels of instruction, grades Pre-K through 12.
- Involve secondary students; impacting them with master classes and workshops led by practicing artists.
- Support teachers and artists in learning methods of arts integration across curriculum.



### HOW IT WORKS:

Visit [salinaarts.com](http://salinaarts.com) and navigate to the Education page to access the digital guide and online form to request an artist visit. Please note that once you have requested a Teaching Artist, you must be responsive to emails and phone calls regarding scheduling. **Final date for making priority requests is 8 am on Friday, August 29, 2025.** This only pertains to the Arts Infusion Program - not the other organizations in the Guide.

**A request does not guarantee that the artists will visit your classroom. However, SAH and artists work hard to get as many sessions scheduled as possible.**

Once the selection process is complete, local Teaching Artists will contact teachers individually after receiving a list of educator requests. Typically this happens in mid-September, with presentations beginning in September and concluding in May. However, if you have a need for an earlier presentation, please contact the SAH Arts Education Coordinator ([sarah.keck@salina.org](mailto:sarah.keck@salina.org)).

**SAH and artists are open to a high level of customization and are available to assist in locating resources.**

#### MAKE A REQUEST

- Find digital guide at [www.salinaarts.com](http://www.salinaarts.com) by navigating to the Education tab or email [sah@salina.org](mailto:sah@salina.org)
- Use the online form to request a session for your classroom
- First request deadline: Friday, August 29, 2025

#### HELP SCHEDULE

- Be a great partner when contacted by a teaching artist or SAH
- Responsive emails and phone calls about scheduling make programs happen

#### ASK US!

- ASK US! We may be able to customize a program for you
- ASK US! We may be able to do an early September or spring program request
- Have a question, an idea for a program, a concern - let us know!

# TEACHING ARTIST OVERVIEW

The Arts Infusion teaching artists have received training from a number of arts institutions (the John F. Kennedy Center for the Performing Arts, Kansas Department of Education) in making applications to English language arts, science, history, and more. Many local teaching artists have received Salina Arts & Humanities' Horizons Developing Artist grants to increase their knowledge of how to implement their artistry in appropriate ways.

Some sessions include optional pre and post-activities for the teacher to use.

Additional details about each session are available upon request.

All lessons are approximately 45 minutes unless otherwise specified.

## VISITING ARTIST DATES

### DRUM SAFARI

- October 13-14, 2025
- March 2026

### THEATRE SALINA

#### IRON STREET DANCE COMPANY

- November 6-7, 2025
- STAGE DOOR 1
- February 19-20, 2026

### DINO O'DELL

- November 10-12, 2025
- February 18-19, 2026

### PRISCILLA HOWE

- December 8-11, 2025
- January 28-30, 2026

### SALINA SYMPHONY

#### SAMANTHA ROSE WILLIAMS, VOCALIST

- January 23, 2026

### TRACI BRIMHALL, KANSAS POET LAUREATE

- April 14, 2026

### DAVID ZINN

- April 2026

### BE ON THE LOOKOUT FOR NOTIFICATIONS

#### GUEST VISUAL ARTIST

- Fall Semester

#### CHAMBER MUSIC CLINICS (VOCAL & INSTRUMENTAL)

- Spring Semester

#### POETRY SERIES GUESTS

- April 2026

Subject	Thad Beach	Ann Zimmerman	Lori Brack	Tia Westling	Darren Morawitz	David Zinn	Cash Hollistah	Traci Brimhall	Friends of the River	Priscilla Howe	Drum Safari	Dino O'Dell	Theatre Salina	Salina Symphony	Public Art In Salina
Social-Emotional	Pg. 8, 10, 12, 14	Pg. 8, 10	Pg. 14	Pg. 11	Pg. 11	Pg. 11	Pg. 15	Pg. 14	Pg. 12, 13	Pg. 15	Pg. 8	Pg. 13, 15	Pg. 8, 9		Pg. 11
Dance/Movement				Pg. 11							Pg. 8		Pg. 8, 9		
Fine Arts					Pg. 11	Pg. 11								Pg. 9	Pg. 11
Fine Arts Career Pathways						Pg. 11								Pg. 9	Pg. 11
Geography	Pg. 10, 12	Pg. 10													
Global Awareness		Pg. 10										Pg. 13			
Health											Pg. 8		Pg. 8		
History	Pg. 10	Pg. 8, 10													
English Language Arts	Pg. 10, 14	Pg. 8, 10	Pg. 14				Pg. 15	Pg. 14		Pg. 15		Pg. 15			
Math	Pg. 10, 12	Pg. 10													
Motor Skills	Pg. 8, 14			Pg. 11		Pg. 11					Pg. 8				
Music	Pg. 8, 10, 12, 14	Pg. 8, 10									Pg. 8	Pg. 15		Pg. 9	
Reading	Pg. 14	Pg. 8	Pg. 14	Pg. 11			Pg. 15	Pg. 14				Pg. 15			
Science	Pg. 10, 12	Pg. 10							Pg. 12, 13			Pg. 13			
Social Studies	Pg. 10	Pg. 10					Pg. 15		Pg. 12, 13	Pg. 15		Pg. 15			
Speaking and Listening	Pg. 14	Pg. 8, 10	Pg. 14				Pg. 15	Pg. 14	Pg. 12, 13	Pg. 15		Pg. 13, 15	Pg. 9		Pg. 11
Visual Arts				Pg. 11	Pg. 11	Pg. 11			Pg. 13						Pg. 11
Writing	Pg. 10	Pg. 8	Pg. 14				Pg. 15	Pg. 14		Pg. 15					
Grade Level	Thad Beach	Ann Zimmerman	Lori Brack	Tia Westling	Darren Morawitz	David Zinn	Cash Hollistah	Traci Brimhall	Friends of the River	Priscilla Howe	Drum Safari	Dino O'Dell	Theatre Salina	Salina Symphony	Public Art In Salina
Pre-K	Pg. 12, 14			Pg. 11					Pg. 12	Pg. 15	Pg. 8	Pg. 15			
K	Pg. 12, 14	Pg. 10		Pg. 11					Pg. 12	Pg. 15	Pg. 8	Pg. 13, 15			
1	Pg. 12, 14	Pg. 10							Pg. 12	Pg. 15	Pg. 8	Pg. 13	Pg. 8, 9		
2	Pg. 12, 14	Pg. 10							Pg. 12	Pg. 15	Pg. 8	Pg. 13	Pg. 8, 9		
3	Pg. 8, 10, 12, 14	Pg. 10							Pg. 13	Pg. 15	Pg. 8	Pg. 13	Pg. 8, 9		Pg. 11
4	Pg. 8, 10, 12	Pg. 8, 10							Pg. 13	Pg. 15	Pg. 8	Pg. 13	Pg. 8, 9		Pg. 11
5	Pg. 8, 10, 12, 14	Pg. 8, 10							Pg. 13	Pg. 15	Pg. 8	Pg. 13	Pg. 8, 9		Pg. 11
6	Pg. 10, 12	Pg. 8, 10	Pg. 14		Pg. 11	Pg. 11	Pg. 15			Pg. 15				Pg. 9	Pg. 11
7	Pg. 10	Pg. 10	Pg. 14		Pg. 11	Pg. 11	Pg. 15			Pg. 15				Pg. 9	Pg. 11
8		Pg. 10	Pg. 14		Pg. 11	Pg. 11	Pg. 15			Pg. 15				Pg. 9	Pg. 11
High School			Pg. 14		Pg. 11		Pg. 15	Pg. 14		Pg. 15				Pg. 9	Pg. 11
Format	Thad Beach	Ann Zimmerman	Lori Brack	Tia Westling	Darren Morawitz	David Zinn	Cash Hollistah	Traci Brimhall	Friends of the River	Priscilla Howe	Drum Safari	Dino O'Dell	Theatre Salina	Salina Symphony	Public Art In Salina
In-class workshop	Pg. 8, 10, 12, 14	Pg. 8, 10	Pg. 14	Pg. 11	Pg. 11	Pg. 11	Pg. 15	Pg. 14	Pg. 12, 13	Pg. 15	Pg. 8	Pg. 13, 15	Pg. 8, 9	Pg. 9	Pg. 11
Assembly - Over 50 students		Pg. 10							Pg. 12	Pg. 15	Pg. 8	Pg. 13, 15	Pg. 8, 9	Pg. 9	
Residency - Multiple visits to same class	Pg. 8, 10	Pg. 8	Pg. 14	Pg. 11											Pg. 11

## DRUM SAFARI

Visiting Artist

October 13-14, 2025 • Spring 2026 TBA



### SAMBA WALK

**Target Grades:** Pre-K - 3

**Time:** 30 - 45 minutes • **Capacity:** 300

**Curricular Connections:** Health (dance, movement), character development (self-awareness, social awareness), active participation, motor skills

**Room Requirements:** Students seated on floor, open space for movement, electricity

Students are invited to join a musical "safari" - they will be introduced to South American animals whose names are set to rhythm. After meeting the animals, each child is given a percussion instrument... and the jungle jam begins! As the rhythms of the animals lock together, an exciting sense of community begins to develop. This program includes interactive songs, dancing, and of course, DRUMMING!

### SOUNDS OF THE SEA: CALMING RHYTHMS FOR FOCUS, BALANCE, AND CREATIVITY

**Target Grades:** K - 4

**Time:** 30 - 45 minutes • **Capacity:** 300

**Curricular Connections:** Health (dance, movement), character development (self-awareness, social awareness), active participation, motor skills

**Room Requirements:** Students seated on floor, open space for movement, electricity

Students will explore the calming rhythms of our oceans while participating in engaging musical activities that develop focus, balance, and creative thinking. Catch a wave with a sea turtle, dance with dolphins, and wiggle with an octopus as we discover the importance of protecting Earth's oceans and rivers. Experience the amazing sounds and brilliant designs of the handpan and ocean drum. Instruments/drum provided for all participants.

## DRUM SAFARI YOGA

**Target Grades:** Pre-K - 5

**Time:** 30 - 45 minutes

**Capacity:** 30

**Curricular Connections:** Health (dance, movement), character development (self-awareness, social awareness), active participation, motor skills

**Room Requirements:** Open space for movement, electricity

World rhythms and animal characters are combined to inspire yoga postures and rhythms. Students will practice strategies for self-calming and creative thinking as they participate in games that encourage balance, cooperative learning skills, and focus.

## ANN ZIMMERMAN SONGWRITING WORKSHOP (2-3 session residency)

**Target Grades:** 4 - 6

**Time:** two, 45-minute sessions (or three shorter sessions)

**Capacity:** 25, one classroom

**Curricular Connections:** Language arts, music, listening, history

**Room Requirements:** Standard classroom, computer & smartboard, electricity

**SESSION I:** Students will use reading, singing, listening, and creative thinking to discover the vivid imagery and musical elements that make up some familiar songs, then work together to write new words to a common tune.

**SESSION II:** Students will learn a traditional song, then work in small groups to write new lyrics for the song. Each group performs the new verses with Ann, as the class listens for imagery and imagination in the writing. After the final session, Ann combines and enhances students' new verses and emails them to the teacher as a complete song.

## THAD BEACH UKULELE FUN & UKULELE FUN FOLLOW-UP

**Target Grades:** 3 - 5 Music Classes

**Time:** 25 - 50 minutes • **Capacity:** 30

**Curricular Connections:** Music, motor skills, social-emotional

**Materials:** Smartboard, classroom ukuleles  
**Room Requirements:** Standard music classroom with smartboard

**UKULELE FUN:** Get your ukulele students inspired as Thad showcases some of his favorite ukulele songs highlighting the key, chords and techniques. Students will not need ukes for this session.

# DRAMA, MOVEMENT, & MUSIC

**UKULELE FUN FOLLOW-UP:** For music classes that have had the first Ukulele Fun session or second-year students. Thad will customize a follow-up session to meet the skill level of students. With ukuleles in hand, students will receive group and individual guidance as they explore a new technique and expand their skills while they sing, strum, hum and have fun with ukes.



## MOVEMENT MATTERS! PRESENTED BY THE IRON STREET DANCE COMPANY

**November 6-7, 2025**

**Target Grades:** 1 - 5

**Time:** 45 minutes • **Capacity:** 100

**Curricular Connections:** Health (dance, movement, communities, individual roles in the community), character development, active participation

**Room Requirements:** Open gym setting or classroom, electricity

In this interactive session, students will learn the importance of staying healthy through physical movement and positive nutrition choices. Students will not only watch two polished dance pieces and hear from the dancers themselves, but will learn some of the dances themselves and discuss the positive effects of physical movement! Movement Matters! provides a post-presentation worksheet for students and teachers to discuss the real-life application of what they learned with Iron Street Dance Company.



## THE COLORS I FEEL - PRESENTED BY STAGE DOOR 1 MUSIC THEATRE COMPANY

February 19-20, 2026



**Target Grades:** 1 - 5

**Time:** 45 minutes • **Capacity:** 100

**Curricular Connections:** Social-emotional, character development  
**Room Requirements:** Gym, open classroom, or auditorium.

Stage Door 1 Music Theatre Company is a group of students from 8th to 12th grade who share their knowledge and skills about acting to help create emotional awareness by making image and color associations. Through a live music theatre production with interactive improvisation games, students can explore their relationship to emotion through song, acting, and color. Paired with using acting techniques that can help students identify their feelings through their own physical and vocal changes.

### THEATRE SALINA - CENTER FOR THEATRE ARTS

303 E. Iron Avenue • Salina, KS 67401  
785-827-6126 • <https://salinatheatre.com/>



Theatre Salina is a non-profit educational organization whose purpose is to enrich the lives of people in Salina and the surrounding region by creating a broad range of quality theatrical programs for their entertainment and education, and to provide people of all ages and backgrounds the opportunity to participate in play production and other theatre activities. Upon participating in a live theatre performance, students will have a better understanding of:

- **Critical Thinking and Developing Empathy** - These are achieved by being asked to put themselves in the protagonist's shoes and empathize with the situation.

- **Communication** - Skills are enhanced by reflecting on how the characters have communicated with each other and whether this caused or resolved a conflict. Perhaps the child can think of a better solution themselves.
- **Collaboration and Community** - This is evident when a student sees the show as a final product, they see what is possible when a group of young people works together to create something.

## SALINA SYMPHONY - SAMANTHA ROSE WILLIAMS

Visiting Artist  
January 23, 2026



**Target Grades:** 6 - 12

**Time:** 45 - 60 minutes • **Capacity:** 15 - 400

**Curricular Connections:** Fine arts, fine arts career pathways, music



The mission of the Salina Symphony is to enrich lives through artistic music performance and education.

### SALINA YOUTH EDUCATION PROGRAM

**Youth Symphony Audition date:** August 24,  
Grades 4-12, Symphony Rehearsal Hall

**Youth Choir Audition date:** August 23,  
Grades 4-8, Symphony Rehearsal Hall

Visit the Youth Education tab at [salinasymphony.org](http://salinasymphony.org) for audition details.

The Salina Symphony Youth Education Program offers the opportunity for area youth to participate in professionally directed youth ensembles. Members

are dedicated to rehearsing weekly throughout the school year to prepare for two-three formal concerts each season. The programs are designed to supplement the school band/choir/orchestra experience, and students must be enrolled in their school program in order to participate. The program also offers students unique opportunities to travel, work with guest conductors, guest artists, and participate in masterclasses.

The Youth Education Program offers students the opportunity to audition for the following ensembles:

- **Youth Symphony** - advanced full orchestra
- **Youth Jazz Band** - intermediate jazz band (grades 7-9)
- **Preparatory Youth Orchestra** - beginning string ensemble
- **Youth Choir** - grades 4-8

## CHAMBER MUSIC CLINICS

Interested in having a vocal or instrumental chamber music group visit your classroom? Be on the lookout for opportunities for grades 6-12 during both the fall and spring semesters. Clinics will include groups of performers to demonstrate concepts and examples, along with experienced teaching artists leading each session. Chamber group clinics can range to include vocal jazz performers to brass quintets and beyond!



## THE SMOKY HILL MUSEUM

211 W. Iron Avenue • P.O. Box 101  
Salina, KS 67402-0101  
www.smokyhillmuseum.org  
Nona Miller, Curator of Education  
785-833-8023 • nona.miller@salina.org

It's history unexpected at the Smoky Hill Museum! We're an active and responsive teacher resource, offering hands-on, minds-on history. Visit The Curiosity Shop, with five areas of engagement (Kansas Weather, World of Radio, Town Building, Tots and The Dirty Thirties). Other offerings include:

- Dynamic, free tours
- Free educational lending library
- Inspiration for artists and writers
- Kansas Days activities (late January)
- Puzzles and research help at [smokyhillmuseum.org/programs-and-tours/teacher\\_resource\\_area/](http://smokyhillmuseum.org/programs-and-tours/teacher_resource_area/)
- Engaging exhibits in the Central Gallery
- Free First Thursdays (great for extra credit)
- 7th Grade Cultural Crawl

**Lessons/Activities:** To learn more about these lessons, please call.

- Cowboys: Grades 1 - 2 (A traveling trunk)
- Pioneer Tool Hunt: Grades K - 4
- Pack Your Wagon: Grades 3 - 6
- Butter Churning: Grades K - 4
- WWII: Pack Your Packard: Grades 4 - 7
- Buffalo: Adaptable
- Native Americans: Grades 4 and up
- Indian Burial Pit: Grades 9 and up

**New Activities:** If you don't see what you're looking for or if you have an idea, please contact the Curator of Education. New activities may be added throughout the year.



## ANN ZIMMERMAN KANSAS SONGS CONCERT

**Target Grades:** K - 8

**Time:** 30 - 45 minutes • **Capacity:** 100

**Curricular Connections:** History, social studies, science, English language arts, social-emotional learning, music

**Room Requirements:** Standard classroom or gym with students seated on floor or at desks, electricity

Students will join in discussion and songs about Kansas, its history, climate, biology, and culture, past and present. An advanced version is available for middle-school classes.

## SONGS OF THE AMERICAN REVOLUTIONARY WAR

**Target Grade:** 5

**Time:** 60 minutes • **Capacity:** 100

**Curricular Connections:** English language arts, math, history, global awareness, social studies, science, music, critical thinking

**Materials:** Computer, smartboard

**Room Requirements:** Standard classroom or gym with students seated on floor or at desks

Students discuss events and people of the American Revolutionary War, visualize the timeline of the war and sing songs early Americans and others sang.

## THAD BEACH LONGITUDE AND LATITUDE WITH A GEO-MUSICAL ATTITUDE!

**Target Grades:** 4 - 6

**Time:** 40 - 50 minutes

**Capacity:** 30, single class

**Curricular Connections:** Geography (maps, the globe, U.S. Regions), math (graphing and plotting), music (ukulele, harmonica, bucket bass)

**Materials:** Copies of handout

**Room Requirements:** Classroom, smartboard/whiteboard, markers

Take an exciting, highly participatory global journey as you develop or reinforce geography skills and vocabulary necessary

# SOCIAL STUDIES

to plot your own longitude and latitude coordinates and identify absolute locations of selected Kansas and U.S. cities.

## EXPLORING THE KANSAS DUST BOWL

**Target Grades:** 3 - 5

**Time:** 45 minutes • **Capacity:** 30

**Curricular Connections:** U.S. History, Kansas geography, math (measuring), social-emotional, music (guitar, harmonica)

**Room Requirements:** Classroom, students at desks, smartboard/whiteboard, markers

Students learn about the Dust Bowl and how children helped their farming families survive. They explore farm chores and household tasks of the 1930's along with how families bartered or traded livestock and farm products to get items they needed. Listening and speaking, following directions, social skill practice and music are integrated throughout.

## POSTCARDS FROM THE DUST BOWL

(Five - Session Residency)

**Target Grade:** 7

**Time:** Five, 45 minute sessions

**Capacity:** 30

**Curricular Connections:** Social studies (Kansas, U.S. Regions, agriculture, the Dust Bowl, the Great Depression), English language arts (narrative writing), visual arts (sketching, drawing), music

**Materials:** Copies of handouts, cardstock, copy paper

**Room Requirements:** Standard classroom, smartboard/whiteboard, markers

During this residency, students learn about the Dust Bowl and Great Depression through multimedia images, primary source interviews and Thad's original songs in order to discuss technology, agricultural practices and environmental causes and effects. They will use creative writing, visual art and musical experiences to create personas and express their characters' emotions and situations, describing Dust Bowl events by writing postcard notes and sketching and sharing with classmates.

## SALINA ARTS & HUMANITIES

### PUBLIC ART PROFESSIONAL PATHWAYS

**Target Grades:** 6 - 12

**Time:** 45 minutes grades 6 - 8; 60 - 80 minutes grades 9 - 12 • **Capacity:** 30

**Curriculum Connections:** Fine arts career pathways, social-emotional, community building, public-speaking, critical thinking, finance, visual arts

**Materials:** writing & drawing materials, paper  
**Room Requirements:** Smartboard

**Session I:** Students are introduced to public art in the community followed by an activity where students explore ideas for a community art project. Team building and discussion are at the heart of the activity as participants generate their own ideas, and work with their peers to further refine and investigate the steps necessary to achieve public art both locally and nationally. This session emphasizes diverse skill sets and a multitude of careers across various industries.

#### Optional Project Session II Follow Up:

This interactive session builds on the discussion topics introduced in Session I with an opportunity to participate in a full group project or smaller, individual led goals during the school year with the intention to encourage taking ownership as emerging community artists. The session will present specific public art opportunities in Salina, including the annual Smoky Hill River Festival. City staff will help students identify gaps and needs for the successful completion and integration of their proposals in collaboration with teachers.

### PUBLIC ART IN SALINA

**Target Grades:** 3 - 6

**Time:** 45 minutes • **Capacity:** 25

**Curriculum Connections:** Healthy communities, social-emotional, fine arts career pathways, fine arts, visual arts  
**Room Requirements:** Smartboard or projector, paper, writing/drawing utensils

Salina Arts & Humanities staff discuss public art in Salina, KS, including the City of Salina's permanent collection, public funding, and other art in public places. Students are guided through a project mimicking the creative development and production of public artwork. They will be prompted to think about murals, monuments, memorials, performance, and how each relates to their lives and neighborhoods as students work with each other to draft their unique ideas.



## DARREN MORAWITZ

### DOODLE MURAL COLLABORATION

**Target Grades:** 6 - 12

**Time:** 45 minutes • **Capacity:** 25

**Curriculum Connections:** Social-emotional, character development (decision making, problem-solving, goal setting, social awareness, interpersonal skills), fine art (creative thinking, scale, creating, responding, connecting)

**Room Requirements:** classroom, students seated, wall space

**Materials:** Computer paper, markers, tape

Students will explore idea generation and creative problem-solving through a collaborative mural project in which they will be guided to create a doodle grid to scale a prepared image. The class will get to keep their work of art as well as take away lessons in collaboration, communication, problem-solving, creative thinking, scale, and how many small and unique pieces create a whole.

## SALINAartcenter

### SALINA ART CENTER

242 S Santa Fe Avenue • Salina, KS 67401  
(785) 827-1431 • [www.salinaartcenter.org](http://www.salinaartcenter.org)

**Educational Programming** - For over 30 years, the Salina Art Center (SAC) has produced educational programs centered on its mission, to create exchanges among art, artists, and audiences that reveal life. The Salina Art Center invites you to learn, experience, and create! The Art Center offers a variety of opportunities for learners of all ages to connect with contemporary art and artists. Develop new skills, explore different mediums, participate, and find your creative voice. Programming includes workshops, the ARTery, artist talks, tours, and more. Personalized tours and group activities are also available.

For a comprehensive list of all educational opportunities, including after-school classes and summer sessions, visit [www.salinaartcenter.org](http://www.salinaartcenter.org) or call 785-827-1431.

ALL CLASSES are held at the SAC Warehouse and Education Studio on 149 S. 4th Street.

## TIA WESTLING

### ART IN MOTION

**Target Grade:** K

**Time:** 25 - 45 minutes

**Capacity:** Pre-K - 15, K - 25

**Curricular Connections:**

Art, fine/gross motor skills, music, social-emotional

**Materials:** A white or black sheet of paper, space to put artwork while it dries

**Room Requirements:** standard classroom size space on tile not carpet; Separate space for art area

Join an exciting journey with activities designed for young children that combine fine and gross motor skills, physical movement, and the magic of music and art! Each season brings a different option where little explorers participate in imaginative activities and creative exercises that bring stories to life. Students will get to develop essential motor skills while fostering their love for art with a take home craft.

**Pumpkin Patch - Fall Semester:** Inspired by the beloved children's book "There Was an Old Lady Who Picked a Pumpkin" by Lucille Colandro, this engaging and interactive class combines fine and gross motor skill development.

**Snowman - December:** During this engaging program, children will immerse themselves in a variety of activities that capture the essence of building and interacting with snowmen.

**Caterpillar - Spring Semester:** Inspired by the beloved children's book "The Very Hungry Caterpillar" by Eric Carle, our little explorers will embark on a series of imaginative activities and creative exercises that bring the story of the hungry caterpillar to life.



## DAVID ZINN

**April 2026 TBA**

**Target Grades:** 6 - 8

**Time:** 45 minutes

**Capacity:** 30

**Curricular**

**Connections:**

Connecting, Creating, Fine Arts Career Pathways

**Materials:** writing utensils, paper  
**Room Requirements:** computer, smartboard or projector screen

David Zinn explores his chalk art career, Fear of the Blank Canvas, and examines the social-emotional and logistical advantages of ephemeral art. Interactive drawing activities, examples of pareidolia, tricks of perspective, and other questions can be addressed depending on time and topic interest.

# VISUAL ARTS

## THAD BEACH THE PUMPKIN LIFE CYCLE

**Target Grades:**

Pre-K - 3

**Time:** 25 - 45  
minutes

**Capacity:** 30

**Curricular**

**Connections:**

Science (animals, organisms, and ecosystems; plants and interdependent relationships), music (harmonica, limberjack, bucket bass), social-emotional

**Room Requirements:** Standard classroom

Students explore the life cycle of pumpkins as they observe, respond, sequence, ask questions, and participate in a creative dramatization of the stages of the pumpkin life cycle. Vocabulary and content are adapted to specific grade levels and range from the basic importance of soil, sun and water, to the introduction of the water cycle, pollination and photosynthesis. Meet Pumpkin Jack the dancing limber jack and sing along with the pumpkin patch bucket bass! Listening and speaking, following directions, social skills practice and music are integrated throughout.

## THE FROG LIFE CYCLE

**Target Grades:** Pre-K - 3

**Time:** 25 - 45 minutes • **Capacity:** 30

**Curricular Connections:** Science (animals, organisms, and ecosystems; plants and interdependent relationships) music (ukulele, harmonica, bucket bass), social-emotional

**Room Requirements:** Standard classroom

Welcome to the Frog Pond for an engaging musical exploration of life cycle vocabulary through creative dramatizations and classroom collaborations. We'll work together to explore the stages and sequences of metamorphosis, predator and prey relationships, habitats, camouflage, and unique amphibian adaptations for survival. Scientific complexity increases with grade level. Listening and speaking, following directions, social skill practice, storytelling, and music are integrated throughout.



## DOWN IN THE SWAMP

**Target Grades:** 3 - 5

**Time:** 25 - 45 minutes • **Capacity:** 30

**Curricular Connections:** Science (animals, organisms, and ecosystems; plants and interdependent relationships), Geography (maps, U.S. regions), Music (ukulele, harmonica, percussion)

**Room Requirements:** Standard classroom with smartboard/whiteboard

Students explore the wetland biome with Thad's original song "Down in the Swamp" and participate in creative movement activities. By comparing and contrasting various plant and animal species students sharpen their scientific classification skills. Students use their observation and descriptive skills to sketch their own swamp scene. Vocabulary and content are adapted to specific grade levels. Listening and speaking, following directions, social skills practice and music are integrated throughout.

## THE SCIENCE OF SOUND

**Target Grades:** 3 - 5

**Time:** 25 - 45 minutes • **Capacity:** 30

**Curricular Connections:** Science (matter and energy, forces, structural properties, waves, light, sound), math, music (string and percussion instruments)

**Room Requirements:** Standard classroom with smartboard (with students seated on floor)

Students explore how sounds are created for various instruments by understanding structural properties, vibration, resonance, sound waves, pitch, volume and tone. Topics include how to vary the pitch of a string by manipulating length, tension and density. Students make observations and predictions, compare and contrast sonic characteristics of different types of instruments. Vocabulary and content is adapted to specific grade levels. Listening and speaking, following directions, social skill practice & music are integrated throughout.

## MONARCHS AND MILKWEED: THE AMAZING MONARCH MIGRATION

**Target Grades:** 4 - 6

**Time:** 45 - 50 minutes • **Capacity:** 30

**Curricular Connections:** Science (animals, organisms, and ecosystems, plants, interdependent relationships), geography (U.S. regions), music (ukulele, harmonica), social-emotional

**Materials:** Copies of handout

**Room Requirements:** Standard classroom with smartboard

Students follow the migration journey from the wintering grounds in the mountains

of Mexico, north to Kansas, and onward to the Prairie Provinces of Canada! Students explore adaptations, predators, climatic elements, food sources and human interactions that affect monarch populations. Vocabulary and content is adapted to specific grade levels. Listening and speaking, following directions, social skill practice and music are integrated throughout.

*\*Get your requests in early for the September Monarch Migration.*

## FRIENDS OF THE RIVER FOUNDATION



## FALL FRENZY & BAD WATER

**Spring Semester 2026**

**Target Grades:** K - 2

**Time:** 45 minutes • **Capacity:** 100

**Curriculum Connections:** Science, social studies, social-emotional, and character development

**Room Requirements:** Gym or classroom

Experience and participate in an adventure as students learn about the Smoky Hill River through puppetry and storytelling. Follow Susie Q. Squirrel as she and the crew prep for winter; then sing along with Edna Catfish and the Nutrient Blues. These stories explore autumn animal behavior, calming anxiety, and the connection between runoff and algae blooms.

# SCIENCE

## RIVER RESCUE CRITTERS

April 2026

Grades: 3 - 5

Program Time: 50 minutes

Capacity: approx. 25 students

**Curriculum Connections:** Water protection, human activity, hazards and renewable resources, ecosystems, multimedia art

Discover the impact of runoff and storm water to help clean a "river," learning to sort waste into reusables, recyclables, compost, and trash. Each student will then build an imaginary critter using recyclables/reusables and create its backstory: where it lives, what it eats, and its defenses. Students take home their creations. Features human impact on waterways and how animals are adapted to their habitats.



## FRIENDS OF THE RIVER

FOUNDATION

159 S. 4th Street • P.O. Box 953 • Salina, KS 67402-0953  
785-493-8491 • [janea@smokyhillriver.org](mailto:janea@smokyhillriver.org)

### FALL FIX UP & SPRING SPRUCE UP

Saturdays, October 4, 2025 & April 18, 2026; 8 am-Noon

The Friends of the River Foundation advocates, communicates and educates for the good of the Smoky Hill River to benefit the community. The Friends offers volunteer opportunities to children under 18. Fall Fix-Up and Spring Spruce-Up are available for students to participate in a river clean-up. Twelve and under must be accompanied by an adult. Tools and materials are provided for students to be able to participate. Gloves not provided.

## DINO O'DELL

February 18-19, 2026

### THE MILKY WAY, MOONS, AND METEORITES!

Target Grades: K - 5

Time: 45 minutes

Capacity: 120

**Curricular Connections:** Space systems, stars and the solar system

**Room Requirements:** Classroom or gym

Students learn about Earth, Earth's atmosphere, our solar system, the planets, friction, the greenhouse effect, and the difference between meteors, meteorites, and meteoroids. We also talk about stars, shooting stars, planets that look like stars, the moon, and historical figures from space like Yuri Gagarin, Neil Armstrong, and Sally Ride. Participating teachers will also receive a post-session worksheet.



## ROLLING HILLS ZOO

325 N. Hedville Road • Salina, KS 67401  
[www.rollinghillszoo.org](http://www.rollinghillszoo.org) • 785-827-9488

### ZOO TO YOU

Can't bring your class out to the Zoo? Then let the Zoo come to you with jam-packed FUN! These interactive wildlife-themed lessons will include touchable bio-facts, an introduction to live animal ambassadors, and a conservation message. Each Zoo To You class is adaptable to any age group. While there is no minimum or maximum number of students, the ideal class size is 35 or less. Pricing is based on the location's distance from the Zoo.



### DISCOVERY CLASS

Have an extra-special adventure at the Rolling Hills Zoo! These interactive classes allow you to choose from one of the many topics available for ages K-8. All classes include an interactive lesson and hands-on experience handling such things as skins, skulls, and teeth. Students will also get to meet a live animal ambassador. Classes are 30 minutes long with a suggested participation size of 35 or less. Give us a call to learn more about our Discovery Class options and pricing.

### ZOO PALOOZA

This program is designed for groups of up to 20 people. This is a 30 minute program based on a specific area of the world, a 30 minute Animal Meet & Greet with 3 ambassador animals, and a 15 minute Keeper Encounter or animal training session based upon availability.

### ADDITIONAL (SCHOOL-BASED) PROGRAMS: PERSONAL GUIDED TOUR

Guided by an experienced zoo staff member, these tours are 1 hour long and include three stops - at Great Apes, Rhinos, and Giraffe. At each stop the tour guide will speak at length about the species, their personal histories and wildlife conservation. Maximum group size for each tour is 30. Give us a call for pricing information and to schedule your tour.

# ENGLISH LANGUAGE ARTS



## LORI BRACK

### 3 POEMS

**Target Grades:** 6 - 12

**Time:** 45 - 90 minutes • **Capacity:** 30

**Curricular Connections:** Reading literature (craft and structure, key ideas and details), writing including figurative language, word choice, analogies, allusions, points of view, and cultural experiences, social-emotional, critical thinking

**Materials:** Pencil, paper, copied handouts

**Room Requirements:** Standard classroom with whiteboard

3 Poems is a lively, interactive lesson that encourages students to read aloud, think critically about the written word, discuss, and write expressively. Excellent poems, selected in consultation with teachers to reflect curriculum goals, will prompt students to communicate personal connections and examine key ideas, literary elements, and cultural experience. Poems and discussion will be the stimulus for students' original writing and appreciative sharing.

## THAD BEACH PHONOLOGICAL AWARENESS WITH MR. R

**Target Grades:** Pre-K

**Time:** 30 minutes • **Capacity:** 20

**Curricular Connections:** Social-emotional, language, music

**Room Requirements:** Standard classroom with students seated on floor

The class participates in activities that help encourage expressing emotions and feelings, build phonological awareness and pre-literacy skills. Students help create an imaginary musical journey with music, songs, chants, and creative props. Listening and speaking, following directions, social skills practice and music integrated throughout.

## LITTLE RED READING WAGON

**Target Grades:** K - 2

**Time:** 25 - 45 minutes • **Capacity:** 30

**Curricular Connections:** English language arts, music (ukulele, harmonica, percussion, limberjack), motor skills, listening and speaking

**Room Requirements:** Standard classroom

Students explore the alphabet and beginning sounds for alliteration and ending rhyme sounds while brainstorming colors, animals and food for song lyrics. Older grades will also use adjectives, nouns and verbs while constructing lyrics. Students will also be singing with appropriate pace, phrasing, intonation, and rhythm, providing a fun, collaborative way to work together and build phonological awareness and literacy skills. Listening and speaking, following directions, social skills practice and music are integrated throughout.

## RADICAL RHYME TIME

**Target Grades:** 2 - 4 • **Time:** 25 - 45 minutes • **Capacity:** 30

**Curricular Connections:** English language arts, music (harmonica, ukulele, bucket bass)

**Materials:** Copied handouts

**Room Requirements:** Standard classroom, smartboard/whiteboard

Students learn Thad's highly successful "Working a Word" speed rhyming strategy to brainstorm rhyme words, create lyric phrases, use adjectives, verbs, and spice it all up with alliteration. Students work individually and collaborate as a group to create new verses. Listening and speaking, following directions, social skills practice and music are integrated throughout.

## TRACI BRIMHALL, POET LAUREATE OF KANSAS

**Visiting Artist**

**April 14, 2026**

### DEAR STRANGER: LETTER POEMS

**Target Grades:** 9 - 12

**Time:** 60 - 80 minutes • **Capacity:** 30

**Curricular Connections:** descriptive writing, metaphor, social-emotional learning

**Room Requirements:** Standard Classroom

This workshop involves poems that use the epistolary—or letter—form to explore ways to write poems that feel direct and full of emotions.

Students will get to participate in activities using metaphors to practice descriptive writing skills and expressing emotions.





## PRISCILLA HOWE

Visiting Artist

December 8-11, 2025

January 28-30, 2026

### STORYTELLER'S CHOICE

**Target Grades:** All grades, tailored to the audience

**Time:** 30 - 45 minutes • **Capacity:** 200

**Curricular Connections:** Prediction sequencing, writing, listening, language arts, social studies, character education

**Room Requirements:** Classroom or gym with students seated on floor or at desks

Whether she's telling world folktales, stories from books, or her own stories with a twist, Priscilla Howe's interactive storytelling performances engage the audience completely. Upper elementary and middle school students fall into a story-listening trance, while younger kinesthetic learners join in on hand motions, songs, and chants. Priscilla's hand puppets come along for the ride with the younger listeners. Students often leave the session repeating lines from the stories or acting them out--and teachers report hearing the stories from students for the next week.

### STORYTELLING, STORY WRITING WORKSHOP

**Target Grades:** 4 - 6

**Time:** 45 minutes • **Capacity:** 30

**Curricular Connections:** Prediction sequencing, writing, listening, English language arts

**Materials:** Pencil, paper

**Room Requirements:** Standard classroom

Storytelling is a perfect lead-in to creative writing. In this highly participatory workshop, storyteller Priscilla Howe introduces concepts such as the difference between oral and written stories, story structure, and backstory. With an open and good-natured attitude, she guides the students in writing exercises to flex and stretch their creative muscles.

## KINDNESS, COMPASSION, AND COURAGE: STORIES FOR CHARACTER EDUCATION

**Target Grades:** K - 6

**Time:** 30 - 45 minutes • **Capacity:** 200

**Curricular Connections:** Reading, language arts, character education, social-emotional and character development

**Room Requirements:** Classroom or gym

These stories highlight character traits such as kindness, courage, respect, and more. After the stories, Priscilla invites listeners to reflect on the traits and how those traits might manifest in their own lives.

## DINO O'DELL

Visiting Artist

November 10-13, 2025

### C IS FOR CHARACTER: TALES AND SONGS FOR PRESCHOOL

**Target Grades:** Pre-K

**Time:** 30 - 45 minutes • **Capacity:** 30

**Curricular Connections:** Parts of a story, character education, social-emotional learning, music

**Room Requirements:** Classroom or gym, electricity access

Questions are a great way to engage attention and evaluate comprehension. C is for Character asks the question, "Who was in the story?" Each of the stories is paired with an interactive song that invites children to sing, move, and respond. Along the way, we explore letter shapes, and practice simple addition and subtraction.

### ZAR & THE BROKEN SPACESHIP: AN AUTHOR EVENT FOR YOUNG READERS

**Target Grades:** Pre-K - K

**Time:** 30 - 45 minutes • **Capacity:** 100

**Curricular Connections:** Parts of a story, reading, language arts, character education, social-emotional, music

**Room Requirements:** Classroom or gym, electricity access

Originally created for the Brooklyn Public Library as an early-readers author event, this session invites students to explore the building blocks of storytelling—who, what, when, where, and why—through interactive songs and tales. The finale is Dino's award-winning book *Zar & the Broken Spaceship*. Young readers become story detectives as they uncover the key details that bring a story to life!



## CASH HOLLISTAH

### KANSAS BEATS & RHYMES

**Target Grades:** 6 - 12

**Time:** 45 minutes

**Capacity:** 25, one classroom

**Curricular Connections:** English language arts, social studies, social-emotional, fine arts career pathways

**Room Requirements:** Electricity, two tables, smartboard

Salina hip-hop artist Cash Hollistah will introduce audiences to the art of rhyme and beatmaking/production. Using visuals and interactive elements, Cash will highlight fellow producers and rappers from the Kansas area who have produced songs for or collaborated with Kendrick Lamar, J. Cole, Tyler, the Creator, Cardi B, Tyga, Megan Thee Stallion, and more.

### POETRY & HIP-HOP

**Target Grades:** 6 - 12

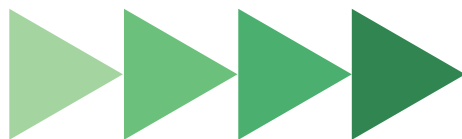
**Time:** 45 minutes

**Capacity:** 25, one classroom

**Curricular Connections:** Music, English language arts, Creative Writing, social-emotional and character development, fine arts career pathways, 21st century skills

**Room Requirements:** Electricity, two tables, projector/TV screen

Salina hip-hop artist Cash Hollistah will introduce audiences to the art of rhyme and explore the history of rap music. Using visuals and interactive elements, Cash will explore the works of artists like Jay-Z, Eminem, and others. Juxtaposing their works with traditional poets such as Robert Frost, Langston Hughes, and more. Following the overview session, Cash will give students a selection of musical "beats" and set a structure for their own writing, which will be read aloud and critiqued by the class.





## SALINA PUBLIC LIBRARY

### **SALINA PUBLIC LIBRARY**

301 W. Elm St. • Salina, KS 67401

785-825-4624

<https://salinapubliclibrary.org/>

### **EDUCATOR CARDS**

Salina Public Library offers an Educator Card for teachers, childcare providers, and homeschool families. This special card provides access to a wide range of books at various reading levels and STEM-focused Educator Kits. Cardholders can check out multiple copies, create temporary classroom collections, and enjoy fine-free borrowing.

### **TOURS & VISITS**

Tours or instruction that highlight the library's print and electronic resources are available to groups or individuals. Staff are also available to visit schools to share information about library services.

### **KANOPY**

With a public library card, patrons can access nearly 30,000 free films through Kanopy, including documentaries, series, and movies that support academic subjects and personal enrichment. Explore the collection at [salinapubliclibrary.org/kanopy](https://salinapubliclibrary.org/kanopy).

### **THE LIBRARY'S COLLECTION**

The library offers a diverse and growing collection of print and digital books, music, movies, TV series, video games, hotspots, and research databases. Online learning tools and personalized book lists are also available. Staff welcome purchase suggestions to meet evolving needs.

### **COMING IN 2026**

Salina Public Library will remodel its Youth Services department in early 2026 to create more engaging and functional spaces for children and families. The community is encouraged to stay tuned for updates.

For more information on any of these services, visit [salinapubliclibrary.org](https://salinapubliclibrary.org) or call (785) 825-4624.



HOME OF THE CROSSROADS CAR EXPERIENCE  
KKOA MUSEUM & HALL OF FAME

### **THE GARAGE**

134 S. Fourth Street • [thegaragesalina.org](https://thegaragesalina.org)

Visit the 40,000 sq. ft. garage in downtown Salina to explore The Garage's rotating collection of artifacts and learn stories of American innovation. Explore. Imagine. Create.



## KANSAS WESLEYAN UNIVERSITY

### **KANSAS WESLEYAN UNIVERSITY**

100 E. Claflin Ave. • Salina, KS 67401

785-827-5541 • [kwu.edu](https://kwu.edu)

Lori Wright, Chair of the Division of Fine Arts

Through educational outreach and seasonal programming, the KWU Division of Fine Arts shares with the Salina community a passion for learning and the responsibility of knowledge.

The Theatre Arts Program in the Department of Communication Studies and Theatre Arts offers concentrations in Theatre and Music Theatre. Students and professors are active participants in the larger theatre community, not only in Salina, but in other cities and various organizations in Kansas.

The Art and Design Department connects with the community through free gallery exhibits and discussions. It also provides professional art, design, and photography services. Students have provided logos, business cards, and flyers for area businesses and individuals.

Vocal and Instrumental Music faculty and students provide KWU Music Learning Day, jazz and band festivals, and outreach concerts for care homes and area churches. In addition, vocal, band, orchestra, and jazz concerts are free to the public.

All areas of Fine Arts at KWU have enjoyed hosting interns from area high schools. Contact the Chair of the Division of Fine Arts, Lori Wright, [lori.wright@kwu.edu](mailto:lori.wright@kwu.edu) for more information.

# COMMUNITY CULTURAL OFFERINGS

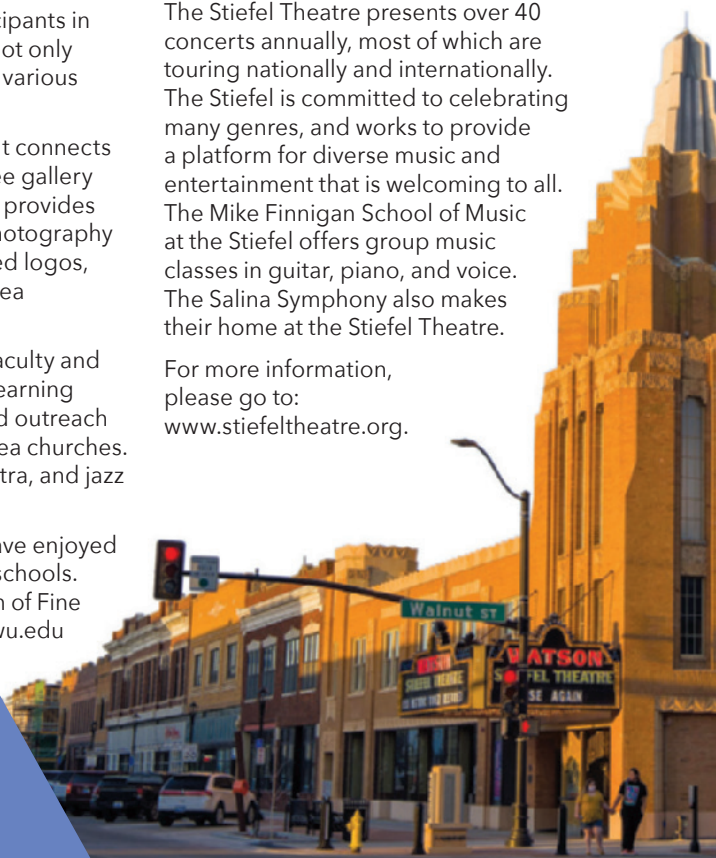


### **STIEFEL THEATRE FOR THE PERFORMING ARTS**

151 S. Santa Fe • 785-827-1998

The Stiefel Theatre presents over 40 concerts annually, most of which are touring nationally and internationally. The Stiefel is committed to celebrating many genres, and works to provide a platform for diverse music and entertainment that is welcoming to all. The Mike Finnigan School of Music at the Stiefel offers group music classes in guitar, piano, and voice. The Salina Symphony also makes their home at the Stiefel Theatre.

For more information, please go to:  
[www.stiefeltheatre.org](https://www.stiefeltheatre.org).



# SALINA ARTS & HUMANITIES

Contact Salina Arts & Humanities  
785-309-5770 • [sah@salina.org](mailto:sah@salina.org) • <http://salinaarts.com/>

## CULTURAL COMMUNITY WEBSITE

<http://salinaarts.com/>

The SAH website features a link to the Salina Arts & Entertainment Calendar ([salinaae.com](http://salinaae.com)), a gallery of local public art, downtown art tour, State of the Arts reports, and other arts resources.

## HORIZONS GRANTS

The Horizons Grants Program is a project of The Salina Arts & Humanities Foundation, offering support to local cultural and service agencies and artists through a variety of grant categories.

Grants offered are:

- Lana Jordan Developing Artist Grants
- Organizational Project Grants
- Enrichment Grants

Grants are available to those residing in Saline County for at least one year and to non-profit agencies. Guidelines and applications are available online.

## CREATIVE CONNECTIONS

A biweekly e-newsletter dedicated to creatives featuring exhibition, performance, employment, professional development, and cultural opportunities.

# SALINA ARTS & HUMANITIES RESOURCES

## SMOKY HILL RIVER FESTIVAL

June 11-14, 2026

Salina's flagship arts celebration brings 60,000 people to Oakdale Park each June. The Festival features national, regional, local, and student performers, a highly ranked Fine Art and Craft Show, Artyopolis, regional food, and more for all ages. Volunteers of all ages are welcome to help produce this vibrant and unique community event. The Smoky Hill River Festival is a project of Salina Arts & Humanities.

## SPRING POETRY SERIES

Tuesdays in April

The Spring Poetry Series celebrates National Poetry Month by presenting poets of national, regional, and emerging status. Poets are available for classroom visits throughout the month of April. Admission for students free with student ID.

## COMMUNITY PROGRAMS AND SERVICES

SAH provides a variety of services to the general community, including arts advocacy, assistance in locating artists or resources, and in its role as the arts and cultural department of the City of Salina.

## THE CULTURAL ROUNDTABLE

The Cultural Roundtable is a consortium of local museums, libraries, galleries, educational institutions, performance, and service organizations. They collaborate to schedule and promote programs, exhibits, and activities of interest to Salina residents and visitors.

## COMMUNITY ART AND DESIGN (CAD) COMMITTEE

Salina Arts & Humanities (SAH) helps bring public art to Salina. Alongside SAH, the CAD Committee plays a vital role in the process of creating Public Art. Its mayoral-appointed membership consists of at-large community members as well as others who bring specific art experience and knowledge to the group.

Creating a piece of public art requires teamwork. On each project, SAH works with the CAD committee and a Site Committee comprised of a cross-section of community members and stakeholders.

The creation of this advisory group was initiated by a citizen-driven desire to create a public art program. CAD assists SAH staff in facilitating the program and implementing the City's Community Art and Design Policy for all public artworks installed on public property. CAD also supports community education, project awareness, marketing of the program, and resource assistance.

### PUBLIC ART IS MEANT TO BE:

- Rewarding! It provides an opportunity for people to see the world around them in a new way.
- Diverse! It can include murals, sculptures, memorials, and more.
- Transformative! It improves the quality of life and inspires conversation.
- Reflective! Great public art reflects the community for which it is created.

**The next time you look at a piece of Salina's public art, ask yourself the following questions:**

- How does public art make you feel when you see it?
- What aspects of the artwork reflect either the place or the people of Salina?
- If you were to create a piece of public art for Salina, what would it be? Where would you put it and why?

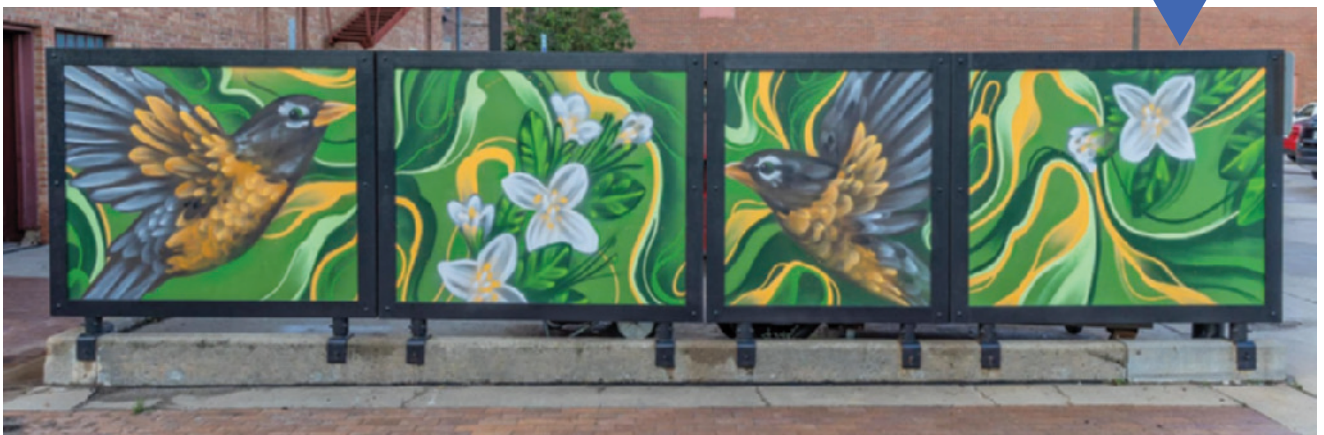
For more information and maps of the public art in Salina, go to the webpage:  
<https://www.salinaarts.com/public-art/>

SAH staff welcomes the opportunity to present a program highlighting the importance of public art and the inclusive process leading to its creation in Salina and regionally. To schedule, contact [sah@salina.org](mailto:sah@salina.org) or call 785-309-5770.

# PUBLIC ART IN SALINA, KS

# MURAL REVEAL!

You've seen the textures and colors of the murals throughout the guide - now see them in their entirety. Each of these murals were painted at the Smoky Hill River Festival and are on display in Salina. Visit the murals in person too!



## ***Robins in Bloom***

2023 Salina Downtown, Inc. Trash Corral Project by Brady Scott  
Located at the west end of Strand Plaza  
118 S. Santa Fe Ave.



## ***Untitled***

2025 Salina Downtown, Inc. Trash Corral Project by Mindy Allen  
Located behind Midwest Music and Old Chicago  
210 S. Santa Fe Ave.



PRESENTED BY  
**SALINA ARTS  
& HUMANITIES**

a department of the City of Salina  
in partnership with USD 305



Content written by Sarah Keck, SAH staff,  
teaching artists, and community cultural agencies.

Design and printing by Valley Print Logistics.

**SALINA ARTS & HUMANITIES**

211 W Iron | Second Floor  
P.O. Box 2181 | Salina, KS 67402-2181  
Phone (785) 309-5770 | Fax (785) 826-7444  
sah@salina.org | salinaarts.com

**STAFF**

Brad Anderson, Executive Director  
Sarah Keck, Arts Education Coordinator  
Anna Pauscher Morawitz, Operations & Development Manager  
Crystal Hammerschmidt, Arts Services Coordinator  
Amanda Morris, Office Administrator  
Allie Fischer, Program Assistant  
Maira Mota, Accounting Technician