

**Arts
Infusion**

2023-2024

**PROGRAM AND
ACTIVITY GUIDE**

**FOR TEACHERS, STUDENTS,
AND COMMUNITY MEMBERS**

**PRESENTED BY
SALINA ARTS & HUMANITIES**

FOR NEEDED ACCOMMODATIONS,

please call Amanda Morris at Salina Arts & Humanities at 785-309-5770 between 8:00 a.m. - Noon and 1:00 p.m. - 5:00 p.m. Every effort will be made to accommodate known disabilities. For material or speech access, please call at least five working days prior to the event.

SALINA ARTS & HUMANITIES,

a department of the City of Salina, has served a unique role as an arts advocate and resource partner since 1966. The Smoky Hill River Festival, Horizons Grants Program, Smoky Hill Museum, Arts Infusion Program in schools, Community Art & Design, and Creative Connections are among the programs of Salina Arts & Humanities, located at 211 W. Iron Avenue in Salina.



Greater Salina Community Foundation

The Greater Salina Community Foundation is an important community partner that provides the resources for many arts and cultural

programs in Salina. A variety of the programs and activities in this guide are supported in part through the Foundation and its donors. The Greater Salina Community Foundation is a collection of funds designed to link donors with charitable causes that meet the needs of the Saline County area and neighboring counties such as Cloud, McPherson, Russell, and Ellsworth. The Foundation aims to build a permanent endowment that facilitates prudent management and care of donor funds to enhance quality of life, both now and in the future.



TABLE OF Contents

Introduction..... 4

Program Overview 5

Teaching Artist Overview 6-7

Artists and Agencies..... 8-15

 Drama, Movement, and Music 8-10

 Social Studies 10-11

 Visual Arts..... 11

 Science..... 12-13

 English Language Arts..... 13-15

Community Cultural Offerings 16

Salina Arts & Humanities Resources 17

Public Art in Salina, KS..... 18

2022-2023 SCHOOL YEAR DATA

Teaching Artists & Cultural Organizations	29
STUDENTS SERVED	14,812
Community Events	6
Community Member Contacts	221

Arts Infusion Program contacts are figured consecutively, i.e. if a student sees an artist two times, it is considered two contacts.



This year's Arts Infusion theme, communication, promises another powerful opportunity to make learning more engaging and inspiring. And, their focus aligns perfectly with one of Salina Public Schools' main goals: communication.

When Arts Infusion artists partner with SPS teachers, the result is a positive learning environment where students have the chance to explore communication skills while engaging in interpretation, performance and creation. Not only will the programs ignite our students' passion for learning, but the programs also help equip them with the skills needed to excel in a world that thrives on creativity and collaboration.

I encourage you to schedule an artist as part of your instruction this year. Together, we can empower our students to reach their full potential and prepare them for a world where creativity knows no bounds.

Linn Exline, Superintendent

Dear Teachers and Lifelong Learners,

Every art discipline is dependent upon good communication. The arts stimulate our senses and improve student learning as sights, sounds, and touch are included in the classroom. Integrating music, movement, literature, and visual art to the curriculum develops deeper personal connections, improves retention, and builds self-confidence in kids.

Local teaching artists and artists-in-residence bring diverse forms of communication and expression to the classroom as they expand on the excellent teaching taking place every day. The partnership with USD305 allows for thousands of kids to explore their creativity and connections with their world.

Thanks to the school district and taxpayers, this guide is filled with opportunities for kids and adults to experience the power of the arts in schools, at cultural venues, or even during a walk on the streets. Explore, engage, and experience the wonderful power of the arts to reflect our humanity.

Sincerely,

Brad Anderson
Executive Director, Salina Arts & Humanities



PROGRAM OVERVIEW



HISTORY

Presenting the arts in schools has been the foundation of program activity for Salina Arts & Humanities (SAH) since 1966. Currently, Arts Infusion represents a much broader perspective in arts education, with resources extended throughout the district, and with secondary students targeted through artist residencies and opportunities to participate in the larger community's cultural environment.

OBJECTIVES

- Encourage involvement in the arts as a source of creative expression and personal fulfillment.
- Recruit, mentor, and employ Salina and area professionals as teaching artists in classrooms at all levels of instruction, grades Pre-K through 12.
- Involve secondary students; impacting them with master classes and workshops led by practicing artists.
- Support teachers and artists in learning methods of arts integration across curriculum.

HOW IT WORKS

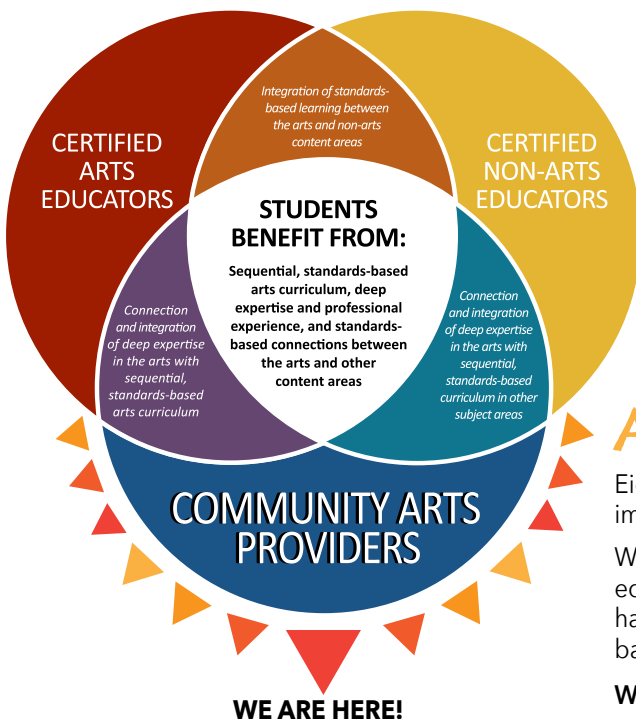
Visit salinaarts.com and navigate to the Programs page to access the digital guide and Google Form to request an artist visit. Please note that once you have requested a Teaching Artist, you must be responsive to emails and phone calls regarding scheduling. **Final date for making priority requests is 8 a.m. on Wednesday, August 30, 2023.** This only pertains to the Arts Infusion Program - not the other organizations in the Guide.

A request does not guarantee that the artists will visit your classroom. However, SAH and artists work hard to get as many sessions scheduled as possible.

The sign-up form is also available online at salinaarts.com; or by emailing Salina Arts & Humanities at: sah@salina.org.

Once the selection process is complete, local Teaching Artists will contact teachers individually after receiving a list of educator requests. Typically this happens in mid-September, with presentations beginning in September and concluding in May. However, if you have a need for an earlier presentation, please contact the SAH Arts Education Coordinator (sarah.keck@salina.org).

SAH and artists are open to a high level of customization and are available to assist in locating resources.



MAKE A REQUEST

- Find digital guide at www.salinaarts.com or email sah@salina.org
- Use the Google Form to request a session for your classroom
- Make requests by 8 a.m. Wednesday, August 30, 2023

HELP SCHEDULE PROGRAMS

- Be a great partner when contacted by a teaching artist or SAH
- Responsive emails and phone calls about scheduling make programs happen

ASK US!

- ASK US! We may be able to customize a program for you
- ASK US! We may be able to do an early September or spring program request
- Have a question, an idea for a program, a concern - let us know!

ARTS EDUCATION – A Shared Endeavor

Eighty-eight percent of Salina residents agree that arts education in our schools is important to the community.

We are fortunate to have strong support of the arts in the classroom and talented arts educators working hard in our schools. Through Arts Infusion, classroom teachers have access to community organizations and teaching artists that provide standards-based arts learning experiences.

When we work together, **ALL** students benefit! **#ArtsMatterSalina**

TEACHING ARTIST OVERVIEW

The Arts Infusion teaching artists have received training from a number of arts institutions (the John F. Kennedy Center for the Performing Arts, Kansas Department of Education) in making applications to English language arts, science, history, and more. Many local teaching artists have received Salina Arts & Humanities' Horizons Developing Artist grants to increase their knowledge of how to implement their artistry in appropriate ways.

Some sessions include optional pre- and post-activities for the teacher to use. Additional details about each session are available upon request. All lessons are approximately minutes unless otherwise specified.

- **Artists by Subject**
- **Artists by Grade**
- **Artists by Format**

SHARON BENSON VISITING ARTISTS

The Sharon Benson Visiting Artist designates a teaching artist each year to provide educational programs and content that reflect cultural diversity while connecting the arts to new and established audiences in relevant ways. 2023-24 artists are Kadesh Flow and Dino O'Dell, music storytelling artists from Kansas City.



VISITING ARTIST DATES

SALINA SYMPHONY - IGNACIO "NACHITO" HERRERA

- September 29, 2023

AUDREY KELLEY

- September 29, 2023

DANIEL VELASCO

- November 3, 2023

AMERICAN PATRIOT

- January 26, 2024

HANZHI WANG

- May 3, 2024

DRUM SAFARI

- October 16-17, 2023 • Spring TBA

DJ CORCHIN

- October 24-25, 2023

THEATRE SALINA - IRON STREET DANCE COMPANY

- October 26-27, 2023

STAGE DOOR 1

- March 21-22, 2024

HUASCAR MEDINA

- November 1-2, 2023

PRISCILLA HOWE

- December 4-7, 2023
- January 31- February 2, 2024

DINO O'DELL

- February 27-29, 2024

KADESH FLOW AND DINO O'DELL

- March 26-27, 2024

Subject		Thad Beach	Ann Zimmerman	Lori Brack	Tia Westling	Darren Morawitz	Curt Krob	DJ Corchin	Huascar Medina	Friends of the River	Priscilla Howe	Drum Safari	Kadesh Flow & Dino O'Dell	Theatre Salina	Salina Symphony	Public Art In Salina
Social-Emotional	Pg. 8, 10, 12, 14			Pg. 14	Pg. 11	Pg. 11	Pg. 11	Pg. 15	Pg. 15	Pg. 13	Pg. 14, 15	Pg. 8	Pg. 11	Pg. 8, 9		Pg. 11
Dance/Movement												Pg. 8		Pg. 8		
Fine Arts						Pg. 11	Pg. 11								Pg. 9	Pg. 11
Fine Arts Career Pathways							Pg. 11								Pg. 9	Pg. 11
Geography	Pg. 10, 12												Pg. 11			
Global Awareness													Pg. 11			
Health												Pg. 8		Pg. 8		
History	Pg. 10	Pg. 10														
English Language Arts	Pg. 10, 13, 14	Pg. 8, 10						Pg. 15	Pg. 15		Pg. 14, 15					
Math	Pg. 10, 12	Pg. 10														
Motor Skills	Pg. 8, 13			Pg. 11								Pg. 8				
Music	Pg. 8, 10, 12,13, 14	Pg. 8, 10										Pg. 8			Pg. 9	
Reading	Pg. 13		Pg. 14	Pg. 11				Pg. 15	Pg. 15							
Science	Pg. 10, 12	Pg. 8, 10								Pg. 13			Pg. 13			
Social Studies	Pg. 10	Pg. 10								Pg. 13	Pg. 14		Pg. 11			
Speaking and Listening	Pg. 13							Pg. 15	Pg. 15	Pg. 13	Pg. 14, 15		Pg. 11	Pg. 9		Pg. 11
Visual Arts				Pg. 11	Pg. 11	Pg. 11										Pg. 11
World Language													Pg. 11			
Writing	Pg. 10		Pg. 14					Pg. 15	Pg. 15		Pg. 14, 15					
Grade Level		Thad Beach	Ann Zimmerman	Lori Brack	Tia Westling	Darren Morawitz	Curt Krob	DJ Corchin	Huascar Medina	Friends of the River	Priscilla Howe	Drum Safari	Kadesh Flow & Dino O'Dell	Theatre Salina	Salina Symphony	Public Art In Salina
Pre-K	Pg. 12, 13, 14				Pg. 11					Pg. 13	Pg. 14, 15	Pg. 8				
K	Pg. 12, 13		Pg. 10		Pg. 11			Pg. 15		Pg. 13	Pg. 14, 15	Pg. 8	Pg. 11, 13			
1	Pg. 12, 13		Pg. 10					Pg. 15		Pg. 13	Pg. 14, 15	Pg. 8	Pg. 11, 13	Pg. 8, 9		
2	Pg. 12, 13		Pg. 10					Pg. 15		Pg. 13	Pg. 14, 15	Pg. 8	Pg. 11, 13	Pg. 8, 9		
3	Pg. 8, 12, 13		Pg. 10					Pg. 15			Pg. 14, 15	Pg. 8	Pg. 11, 13	Pg. 8, 9		Pg. 11
4	Pg. 8, 10, 12		Pg. 8, 10					Pg. 15			Pg. 14, 15	Pg. 8	Pg. 11, 13	Pg. 8, 9		Pg. 11
5	Pg. 8, 10, 12		Pg. 8, 10					Pg. 15			Pg. 14, 15	Pg. 8	Pg. 11, 13	Pg. 8, 9		Pg. 11
6	Pg. 10, 12		Pg. 8, 10	Pg. 14		Pg. 11	Pg. 11	Pg. 15	Pg. 15		Pg. 14, 15				Pg. 9	Pg. 11
7	Pg. 10		Pg. 10	Pg. 14		Pg. 11	Pg. 11		Pg. 15		Pg. 14, 15				Pg. 9	Pg. 11
8			Pg. 10	Pg. 14		Pg. 11	Pg. 11		Pg. 15		Pg. 14, 15				Pg. 9	Pg. 11
High School				Pg. 14		Pg. 11	Pg. 11		Pg. 15		Pg. 14, 15				Pg. 9	Pg. 11
Format		Thad Beach	Ann Zimmerman	Lori Brack	Tia Westling	Darren Morawitz	Curt Krob	DJ Corchin	Huascar Medina	Friends of the River	Priscilla Howe	Drum Safari	Kadesh Flow & Dino O'Dell	Theatre Salina	Salina Symphony	Public Art In Salina
In-class workshop	Pg. 8, 10, 12, 13, 14	Pg. 8, 10	Pg. 14	Pg. 11	Pg. 11	Pg. 11	Pg. 11	Pg. 15	Pg. 15	Pg. 13	Pg. 14, 15	Pg. 8	Pg. 11, 13	Pg. 8, 9	Pg. 9	Pg. 11
Assembly - Over 50 students		Pg. 10								Pg. 13	Pg. 14, 15	Pg. 8	Pg. 11, 13	Pg. 8, 9		
Residency - Multiple visits to same class	Pg. 8, 10	Pg. 8	Pg. 14	Pg. 11								Pg. 8				

DRUM SAFARI

Visiting Artist

October 16-17, 2023

Spring TBA



SAMBA WALK

Target Grades: Pre-K - 3

Time: 30-45 minutes

Capacity: 300

Curricular Connections: Health (dance, movement), character development (self-awareness, social awareness), active participation, motor skills

Room Requirements: Students seated on floor, open space for movement, electricity

Students are invited to join a musical "safari" - they will be introduced to South American animals whose names are set to rhythm. After meeting the animals, each child is given a percussion instrument... and the jungle jam begins! As the rhythms of the animals lock together, an exciting sense of community begins to develop. This program includes interactive songs, dancing, and of course, DRUMMING!

SOUNDS OF THE SEA: CALMING RHYTHMS FOR FOCUS, BALANCE, AND CREATIVITY

Target Grades: K - 4

Time: 30-45 minutes

Capacity: 300

Curricular Connections: Health (dance, movement), character development (self-awareness, social awareness), active participation, motor skills

Room Requirements: Students seated on floor, open space for movement, electricity

Students will explore the calming rhythms of our oceans while participating in engaging musical activities that develop focus, balance, and creative thinking. Catch a wave with a sea turtle, dance with dolphins, and wiggle with an octopus as we discover the importance of protecting Earth's oceans and rivers. Experience the amazing sounds and brilliant designs of the handpan and ocean drum. Instruments/drums provided for all participants.

DRUM

SAFARI YOGA

Target Grades: Pre-K - 5

Time: 30-45 minutes

Capacity: 30

Curricular Connections:

Health (dance, movement), character development (self-awareness, social awareness), active participation, motor skills

Room Requirements: Open space for movement, electricity

World rhythms and animal characters are combined to inspire yoga postures and rhythms. Students will practice strategies for self-calming and creative thinking as they participate in games that encourage balance, cooperative learning skills, and focus.

ANN ZIMMERMAN

SONGWRITING WORKSHOP

(2-3 session residency)

Target Grades: 4 - 6

Time: Two, 45-minute sessions (or three shorter sessions)

Capacity: 25, one classroom

Curricular Connections: Science, language arts, music

Room Requirements: Standard classroom, smartboard/whiteboard, electricity

SESSION I: Students will use reading, singing, listening, and creative thinking to discover the vivid imagery and musical elements that make up some familiar songs, then work together to write new words to a common tune.

SESSION II: Students will learn a traditional song, then work in small groups to write new lyrics for the song. Each group performs the new verses with Ann, as the class listens for imagery and imagination in the writing. After the final session, Ann combines students' new verses and sends them by email to the teacher as a complete outline.

THAD BEACH

UKULELE FUN & FOLLOW UP

Target Grades: 3 - 5 Music Classes

Time: 25 - 50 minutes; single visit or two with Follow Up

Capacity: 30, one classroom

Curricular Connections: Music, motor skills, social-emotional

Materials: Smartboard, classroom ukuleles

Room Requirements: Standard music classroom with smartboard

UKULELE FUN: Get your ukulele students inspired as Thad shares and demonstrates how he learned his first ukulele song for elementary school show-and-tell. Listen and identify techniques and essential chords and fingerings in the keys of F and C.

UKULELE FUN FOLLOW-UP SESSION: For music classes that have had the first Ukulele Fun session or second-year students. Thad will customize a follow-up session to meet the skill level of students. They will explore techniques and expand their skills while they sing, strum, hum and have fun with ukes.

DRAMA, MOVEMENT, & MUSIC



MOVEMENT MATTERS! PRESENTED BY THE IRON STREET DANCE COMPANY

Visiting Artist

October 26-27, 2023

Target Grades: 1 - 5

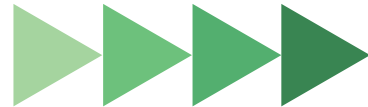
Time: 45 minutes

Capacity: 100

Curricular Connections: Health (dance, movement, communities, individual roles in the community), character development, active participation

Room Requirements: Open gym setting or classroom, electricity

In this interactive session, students will learn the importance of staying healthy through physical movement and positive nutrition choices. Students will not only watch two polished dance pieces and hear from the dancers themselves, but will learn some of the dances themselves and discuss the positive effects of physical movement! Movement Matters provides a post-presentation worksheet for students and teachers to discuss the real-life application of what they learned with Iron Street Dance Company.



THE COLORS I FEEL - PRESENTED BY STAGE DOOR 1 MUSIC THEATRE COMPANY

Visiting Artist

March 21-22, 2024



Target Grades: 1 - 5

Time: 45 minutes

Capacity: 100

Curricular Connections: Social-emotional, character development

Room Requirements: Gym, Open Classroom, or Auditorium.

Stage Door 1 Music Theatre Company is a group of students from 8th to 12th grade who share their knowledge and skills about acting to help create emotional awareness. Through a live music theatre production with interactive improvisation games, students can explore their relationship to emotion through song, acting, and color. Paired with using acting techniques that can help students identify their feelings through their own physical and vocal changes.

THEATRE SALINA - CENTER FOR THEATRE ARTS

303 E. Iron Avenue

Salina, KS 67401

785-827-6126

<https://salinatheatre.com/>



Theatre Salina is a non-profit educational organization whose purpose is to enrich the lives of people in Salina and the surrounding region by creating a broad range of quality theatrical programs for their entertainment and education, and to provide people of all ages and backgrounds the opportunity to participate in play production and other theatre activities. Upon participating in a live theatre performance, students will have a better understanding of:

• **Critical Thinking and Developing Empathy** -

These are achieved by being asked to put themselves in the protagonist's shoes and empathize with the situation.

• **Communication** - Skills are enhanced by reflecting on how the characters have communicated with each other and whether this caused or resolved a conflict. Perhaps the child can think of a better solution themselves.

• **Collaboration and Community** - This is evident when a student sees the show as a final product, they see what is possible when a group of young people works together to create something.



SALINA SYMPHONY - IGNACIO "NACHITO" HERRERA, JAZZ PIANO - SEPTEMBER 29, 2023

AUDREY KELLEY, COMPOSER - SEPTEMBER 29, 2023

DANIEL VELASCO, FLUTE - NOVEMBER 3, 2023

AMERICAN PATRIOTS, THEATRICAL SONG-CYCLE - JAN 26, 2024

HANZHI WANG, ACCORDIAN - MAY 3, 2024

Target Grades: 6 - 12

Time: 45-60 minutes

Capacity: 15-400

Curricular Connections: Fine arts, fine arts career pathways, music

Room Requirements: Classroom, music room

SALINA SUMMER STRINGS: JUNE 2024

Salina Summer Strings at Kansas Wesleyan University

A week-long opportunity is available to string students to study chamber music on a university campus with professional-level instructors. Edmund and Rudolph Stein return to Salina to partner with Kansas Wesleyan University to instruct students through masterclasses, rehearsal coachings, and other instructional clinics. Students will develop skills in leadership, interpersonal skills, critical thinking, and incorporating their soloistic playing into an ensemble setting. For more information, please visit: salinasummerstrings.com.



SALINA SYMPHONY

The mission of the Salina Symphony is to enrich lives through artistic music performance and education.

SALINA YOUTH EDUCATION PROGRAM

Youth Instrumental Audition date: August 27, Grades 4-12, Symphony Rehearsal Hall

Youth Choir Audition date: August 26, Grades 4-8, Symphony Rehearsal Hall

Visit the Youth Education tab at salinasymphony.org for audition details. The Salina Symphony Youth Education The Salina Symphony Youth Education Program offers the opportunity for area youth to participate in professionally directed youth ensembles. Members are dedicated to rehearsing weekly throughout the school year to prepare for two-three formal concerts each season. The programs are designed to supplement the school band/choir/orchestra experience, and students must be enrolled in their school program in order to participate. The program also offers students unique opportunities to travel, work with guest conductors, guest artists, and participate in masterclasses.

The Youth Education Program offers students the opportunity to audition for the following ensembles:

- Youth Symphony—advanced full orchestra
- Youth String Ensemble—intermediate string ensemble
- Youth Wind Ensemble—intermediate wind ensemble
- Preparatory Youth Orchestra—beginning string ensemble
- Youth Choir—grades 4-8





THE SMOKY HILL MUSEUM

211 W. Iron Avenue • P.O. Box 101
Salina, KS 67402-0101

www.smokyhillmuseum.org

Nona Miller, Curator of Education
785-833-8023 • nona.miller@salina.org

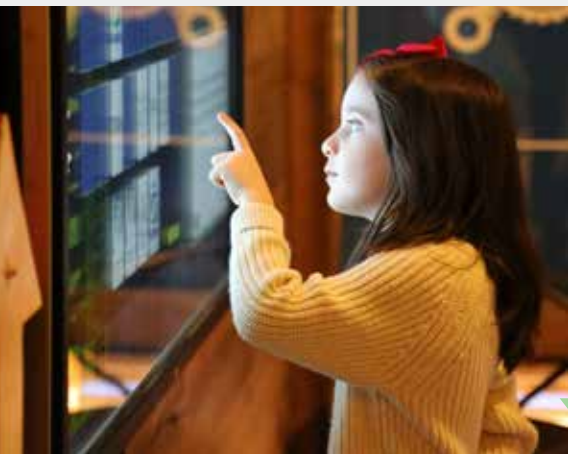
It's history unexpected at the Smoky Hill Museum! We're an active and responsive teacher resource, offering hands-on, minds-on history. Visit *The Curiosity Shop*, with five areas of engagement (Kansas Weather, World of Radio, Town Building, Tots and The Dirty Thirties). Other offerings include:

- Dynamic, free tours
- Free educational lending library
- Inspiration for artists and writers
- Kansas Days activities (late January)
- Puzzles and research helps at smokyhillmuseum.org/programs-and-tours/teacher_resource_area/
- Engaging exhibits in the Central Gallery
- Free First Thursdays (great for extra credit)
- 7th Grade Cultural Crawl

LESSONS/ACTIVITIES: To learn more about these lessons, please call.

- Cowboys: Grades 1 - 2 (A traveling trunk)
- Pioneer Tool Hunt: Grades K - 4
- Pack Your Wagon: Grades 3 - 6
- Butter Churning: Grades K - 4
- WWII: Pack Your Packard: Grades 4 - 7
- Buffalo: Adaptable
- Native Americans: Grades 4 and up
- Indian Burial Pit: Grades 9 and up

NEW ACTIVITIES: If you don't see what you're looking for or if you have an idea, please contact the Curator of Education. New activities may be added throughout the year.



ANN ZIMMERMAN KANSAS SONGS CONCERT

Target Grades: K - 8

Time: 30 - 45 minutes

Capacity: 100

Curricular Connections:

Math, history, social studies, science, English language arts (connections according to grade level)

Room Requirements:

Standard classroom or gym with students seated on floor or at desks



photo by Scott Seirer

Students will join in discussion and singing about Kansas, its history, climate, biology, and culture, past and present. An advanced version is available for middle-school classes.

SONGS OF THE AMERICAN REVOLUTIONARY WAR

Target Grade: 5

Time: 60 minutes

Capacity: 100

Curricular Connections: English language arts, math, history, social studies, science, music

Materials: Smartboard/whiteboard, electricity

Room Requirements: Standard classroom or gym with students seated on floor or at desks

Students will discuss events and people of the American Revolutionary War, visualize the timeline of the war and sing songs that Americans and others sang.

THAD BEACH

LONGITUDE AND LATITUDE WITH A GEO-MUSICAL ATTITUDE!

Target Grades: 4 - 6

Time: 40 - 50 minutes

Capacity: 30, one classroom

Curricular Connections: Geography (maps, the globe, U.S. Regions), math (graphing and plotting), music (ukulele, harmonica bucket bass)

Materials: Copies of handout

Room Requirements: Classroom, students seated on floor, large open floor space to make grid, smartboard/whiteboard, markers

Take an exciting, highly participatory global journey as you develop or reinforce geography skills and vocabulary necessary to plot your own longitude and latitude coordinates and identify absolute locations of selected Kansas and U.S. cities. Powered by Thad's imagination, sense of humor, Ukulele, Harmonica, and Bucket Bass!

SOCIAL STUDIES

EXPLORING THE KANSAS DUST BOWL

Target Grades: 3 - 5

Time: 45 minutes

Capacity: 30, one classroom

Curricular Connections: U.S. History, Kansas geography, math and measuring, social skills and emotional awareness, music (guitar, harmonica)

Room Requirements: Classroom, students at desks, smartboard/whiteboard, markers

Learn about the Dust Bowl and how children helped their farming families survive. Learn about farm chores, household tasks and how families bartered and traded livestock and farm products to get items they needed. Participatory Songs about going to town to trade and preparing a typical Dust Bowl breakfast.

POSTCARDS FROM THE DUST BOWL (Four-Session Residency)

Target Grade: 7

Time: Four, 45-minute sessions

Capacity: 30, one classroom

Curricular Connections: Social studies: The Great Depression and The Dust Bowl, science: agriculture, technology and climate, language arts: persona and narrative writing, visual art, creating postcard sketches, music: listening to and singing Dust Bowl Songs.

Materials: Copies of handouts, cardstock, copy paper

Room Requirements: Standard classroom, smartboard/whiteboard, markers

During this residency, students learn about the Dust Bowl and Great Depression through multimedia images, primary source interviews and Thad's original songs in order to discuss technology, agricultural practices and environmental causes and effects. They will use creative writing, visual art and musical experiences to create personas and express their characters' emotions and situations, describing Dust Bowl events by writing postcard notes and sketching and sharing with classmates.

ART IN MOTION

Target Grades: Pre-K, K

Time: 25 - 45 minutes

Capacity: Pre-K - 15, K - 25

Curricular Connections: Art, fine/gross motor skills, music, social-emotional.

Materials: A white art sheet of paper for each child participating with their name on bottom right. A space to put their art work while it dries.

Room Requirements: Standard classroom size space on tile not carpet.

Caterpillar - Join an exciting journey into the world of music and art with our "Hungry Caterpillar Adventures" class designed for children aged 3 to 6! Inspired by the beloved children's book "The Very Hungry Caterpillar" by Eric Carle, this engaging and interactive class combines fine and gross motor skills development with the magic of music and art. In this dynamic program, our little explorers will embark on a series of imaginative activities and creative exercises that bring the story of the hungry caterpillar to life. Through a combination of movement, music, and artistic expression, children will develop essential motor skills while fostering their love for art with a take-home craft

Snowman - Welcome to our delightful "Snowman Fun" class, specially designed for children aged 3 to 6, where we'll embark on a winter adventure exploring fine and gross motor skills through the enchanting world of snowmen through art!

This interactive and hands-on class combines music, physical movement, and artistic expression to foster motor skill development while igniting children's imaginations. During this engaging program, children will immerse themselves in a variety of activities that capture the essence of building and interacting with snowmen. Through a balance of fine and gross motor skill exercises, they will enhance their physical abilities while having loads of frosty fun.



SALINA ART CENTER

242 S Santa Fe Avenue • Salina, KS 67401

(785) 827-1431 • www.salinaartcenter.org

EDUCATIONAL PROGRAMMING

For over 30 years, the Salina Art Center (SAC) has produced educational programs centered on its mission, to create exchanges among art, artists, and audiences that reveal life.

The Salina Art Center invites you to learn, experience, and create! The Art Center offers a variety of opportunities for learners of all ages to connect with contemporary art and artists. Develop new skills, explore different mediums, participate, and find your creative voice. Programming includes workshops, the ARTery, artist talks, tours, and more. Personalized tours and group activities are also available.

For a comprehensive list of all educational opportunities, including after-school classes and summer sessions, visit www.salinaartcenter.org or call 785-827-1431. ALL CLASSES are held at the SAC Warehouse and Education Studio at 149 S. 4th Street.

**CURT KROB
SCULPTURE TECHNIQUES**

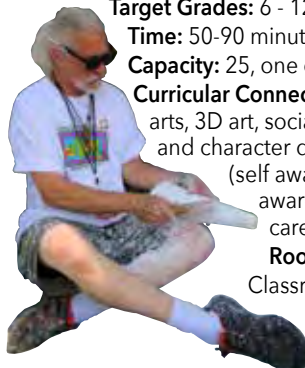
Target Grades: 6 - 12

Time: 50-90 minutes

Capacity: 25, one classroom

Curricular Connections: Fine arts, 3D art, social-emotional and character development (self awareness, social awareness), fine arts career pathway.

Room Requirements: Classroom, one table.



explores his process of artistic inspiration from doodle or sketch through clay model to the eventual finished product, touching on the tools he uses in this interactive discussion. In his presentation, Curt transitions from sand sculpture to his self-developed technique for paper mache/mixed media and draws comparisons to the creation of both.

**VISUAL
ARTS**

**KADESH FLOW AND
DINO O'DELL**

Visiting Artists

March 26-27, 2024

WORLD CONNECTIONS

Target Grades: K - 3

Time: 45 minutes

Capacity: 120

Curricular Connections: Physical geography, landforms, social-emotional and character development; communication

Room Requirements: Classroom or gym

This geographical journey transports students to all seven continents and highlights details about each one. The student learn about the world's longest river, tallest mountain, and the largest desert. Students also learn the names and locations of all the continents, and important cultural facts about each one.



**DOODLE MURAL
COLLABORATION -
DARREN MORAWITZ**

SALINA ART CENTER

Target Grades: 6 - 12

Time: 45 minutes

Capacity: 25 students, one classroom

Curricular Connections: Social-emotional & character development (decision making, problem-solving, goal setting, social awareness, interpersonal skills), fine art (creative thinking, scale, creating, responding, connecting)

Room Requirements: classroom, students seated, wall space

Materials: Computer paper, markers, tape

Students will explore idea generation and creative problem-solving through a collaborative mural project in which they will be guided to create a doodle grid to scale a prepared image. The class will get to keep their work of art as well as take away lessons in collaboration, communication, problem-solving, creative thinking, scale, and how many small and unique pieces create a whole.



ROLLING HILLS ZOO

325 N. Hedville Road • Salina, KS 67401
www.rollinghillszoo.org
785-827-9488

ZOO TO YOU

Can't bring your class out to the Zoo? Then let the Zoo come to you with jam-packed FUN! These interactive wildlife-themed lessons will include touchable bio-facts, an introduction to live animal ambassadors, and a conservation message. Each Zoo To You class is adaptable to any age group. While there is no minimum or maximum number of students, the ideal class size is 35 or less. Pricing is based on the location's distance from the Zoo.

DISCOVERY CLASS

Have an extra-special adventure at the Rolling Hills Zoo! These interactive classes allow you to choose from one of the many topics available for ages K-8. All classes include an interactive lesson and hands-on experience handling such things as skins, skulls, and teeth. Students will also get to meet a live animal ambassador. Classes are 45 minutes long with a suggested participation size of 35 or less. Give us a call to learn more about our Discovery Class options and pricing.

ZOO PALOOZA

This program is designed for groups of up to 20 people. This is a 30-minute program based on a specific area of the world, a 30-minute Animal Meet & Greet with 3 ambassador animals, and a 15-minute Keeper Encounter or animal training session. (Based upon availability).

ADDITIONAL (SCHOOL BASED) PROGRAMS:

• PERSONAL GUIDED TOUR

Guided by an experienced zoo staff member, these tours are 1 hour and 30 minutes long and include three stops - at Great Apes, Rhinos, and Giraffe. At each stop the tour guide will speak at length about the species, their personal histories and wildlife conservation. Maximum group size for each tour is 20. Give us a call for pricing information and to schedule your tour.



THAD BEACH THE PUMPKIN LIFE CYCLE

Target Grades: Pre-K - 3

Time: 25 - 45 minutes

Capacity: 30, one classroom

Curricular

Connections:

Science (animals, organisms, and ecosystems; plants and interdependent relationships), music (harmonica, limberjack, bucket bass), social-emotional.

Room Requirements: Standard classroom with smartboard (with students seated on floor)

Thad's music, movement, creative dramatizations, and collaborations explore the pumpkin life cycle. Students will build vocabulary, describe and sequence events, and practice problem-solving skills as they explore grade-appropriate concepts such as soil, water, sunshine, photosynthesis, and pollination. Meet Pumpkin Jack the Dancing Limberjack and sing along with the Pumpkin Patch Bucket Bass!



DOWN IN THE SWAMP

Target Grades: 3 - 5

Time: 25 - 45 minutes

Capacity: 30, one classroom

Curricular Connections: Science (animals, organisms, and ecosystems; plants and interdependent relationships), Geography (maps, U.S. regions), Music (ukulele, harmonica, percussion)

Room Requirements: Standard classroom with smartboard/whiteboard

Head into the swamps of North America! Build your scientific classification skills while encountering and identifying mammals, reptiles, amphibians, avians, insects, crustaceans, Spanish moss, cypress trees, and even carnivorous plants. We'll turn your room into a lively, singing swamp, and then you'll sketch your own swamp scene. Vocabulary and content are adapted to specific grade levels.

THE SCIENCE OF SOUND

Target Grades: 3 - 5

Time: 25 - 45 minutes

Capacity: 30, one classroom

Curricular Connections: Science (matter and energy, forces, structural properties, waves, light, sound), math, music (string and percussion instruments).

Room Requirements: Standard classroom with smartboard (with students seated on floor)

Explore Thad's fun and unique instruments! Compare and contrast, make observations and predictions, and understand what makes instruments sound like they do. We'll sing, laugh, learn, collaborate, and problem-solve as we encounter volume, density, pitch, kinetic and potential energy, soundwaves, vibrations, and resonating chambers. Vocabulary and content are adapted to specific grade levels.

MONARCHS AND MILKWEED: THE AMAZING MONARCH MIGRATION

Target Grades: 4 - 6

Time: 45 - 50 minutes

Capacity: 30, one classroom

Curricular Connections: Science (matter and energy, forces, structural properties, waves, light, sound), math, music (string and percussion instruments).

Room Requirements: Standard classroom with smartboard (with students seated on floor)

Students follow the migration journey from the wintering grounds in the mountains of Mexico, north to Kansas, and onward to the Prairie Provinces of Canada! Explore the importance of milkweed in the monarch butterfly life cycle, adaptations, predators, climatic elements, and human interactions that affect monarch populations. Vocabulary and content are adapted to specific grade levels.

***Get your requests in early for the September Monarch Migration.**

THE FROG LIFE CYCLE

Target Grades: Pre-K - 3

Time: 25 - 45 minutes

Capacity: 30, one classroom

Curricular Connections: Science (animals, organisms, and ecosystems; plants and interdependent relationships) music (ukulele, harmonica, bucket bass), social-emotional.

Room Requirements: Standard classroom with smartboard

Welcome to the Frog Pond for an engaging musical exploration of life cycle vocabulary through creative dramatizations and classroom collaborations. We'll work together to explore the stages and sequences of metamorphosis, predator and prey relationships, habitats, camouflage, and unique amphibian adaptations for survival. Scientific complexity increases with grade level. Listening and speaking, following directions, social skill practice, storytelling, and music are integrated throughout.

SCIENCE

ENGLISH LANGUAGE ARTS

DINO O'DELL

Visiting Artist

February 27-29, 2024

THE MILKY WAY, MOONS, AND METEORITES!

Target Grades: K - 5

Time: 45 minutes

Capacity: 120

Curricular Connections: Space systems, stars and the solar system

Room Requirements: Classroom or gym

Students learn about Earth, Earth's Atmosphere, our solar system, the planets, friction, the greenhouse effect, and the difference between meteors, meteorites, and meteoroids. We also talk about stars, shooting stars, planets that look like stars, the moon, and historical figures from space like Yuri Gagarin, Neil Armstrong, and Sally Ride. Participating teachers will also receive a post-session worksheet.



FRIENDS OF THE RIVER FOUNDATION



MYSTERY ON THE RIVER - Fall Semester 2023

Target Grades: Pre-K; K - 2

Time: 45 minutes

Capacity: 100

Curricular Connections: Science, social studies, social-emotional, and character development

Room Requirements: Classroom or gym

Experience and participate in an adventure as we learn about the Smoky Hill River through puppetry and storytelling. Join Bella Beaver and the gang as they meet a new face and figure out if she is friend or foe; then continue the adventure with a "who dun it"

mystery. These stories introduce the defenses of animals along the river and follow clues to track something to the source.

159 S. 4th Street • P.O. Box 953
Salina, KS 67402
785-493-8491
janea@smokyhillriver.org

The Friends of the River Foundation strives to restore the natural channel of the Smoky Hill River to its role as

an integral part of the aesthetic, recreational, and economic life of Salina.

Executive Director Jane Anderson will visit your class with an overview and update about the Smoky Hill River Renewal Project. This project is exciting for all the aspects it affects: recreation, environmental renewal, and redevelopment for the core of Salina. Presentations can be tailored to any age group.

The Friends of the River Foundation offers volunteer opportunities to children under 18. Fall Fix-Up and Spring Spruce-Up are available for students to come and join a river clean-up or a project helping the parks. Dates are Saturday, October 14th and Saturday April 27th from 8:00 am to noon. Twelve and under must be accompanied by an adult. All tools and materials are provided for students to be able to participate.



THAD BEACH

RADICAL RHYME TIME

Target Grades: 2 - 3

Time: 45 minutes

Capacity: 30, one classroom

Curricular Connections: English language arts, music (harmonica, ukulele, bucket bass).

Materials: Copied handouts, markers

Room Requirements: Standard classroom, smartboard/whiteboard.

Students learn Thad's highly successful "Working a Word" speed rhyming strategy to brainstorm rhyme words, create lyric phrases, use adjectives, verbs, and spice it all up with alliteration. Students work individually and collaborate as a group, then celebrate by performing their creations with Thad's "Band in a Bucket" instruments.

LITTLE RED READING WAGON

Target Grades: K - 2

Time: 25 - 45 minutes

Capacity: 30, one classroom

Curricular Connections: English language arts, music (ukulele, harmonica, percussion, limberjack), motor skills, listening and speaking.

Room Requirements: Standard classroom

Participatory musical experience explores letters and sounds, alliteration and rhyme. The class brainstorms and creates songs about colors, animals, and food while singing and playing along on homemade instruments. A fun, collaborative way to work together and build phonological awareness and literacy skills.



ENGLISH LANGUAGE ARTS

THAD BEACH

PHONOLOGICAL AWARENESS WITH MR. R

Target Grades: Pre-K

Time: 30 minutes

Capacity: 20, one classroom

Curricular Connections: Social-emotional, English language arts, music (ukulele, harmonica, percussion, limberjack).

Materials: none needed

Room Requirements: Standard classroom (with students seated on floor)

Students participate in activities that help build phonological awareness and pre-literacy skills, while given opportunities to express emotions and feelings. They meet Mr. R (the dancing limberjack), welcome him to the classroom, learn what Mr. R likes to do and collaborate to create an imaginary musical journey with music, songs, chants, and creative props.



LORI BRACK

3 POEMS

Target Grades: 6 - 12

Time: 45-90 minutes

Capacity: 30

Curricular Connections: Reading: literature (craft and structure, key ideas and details), writing (language in writing) to include figurative language, word choice, analogies and allusions, points of view, and cultural experiences, social-emotional and character development.

Materials: Pencil, paper, copied handouts

Room Requirements: Standard classroom with whiteboard

3 Poems is a lively, interactive lesson that encourages students to read aloud, think and discuss, and write expressively. Excellent poems, selected in consultation with teachers to reflect curriculum goals, will prompt students to communicate personal connections and examine metaphor, word choice, key ideas, and cultural experience. The poems and discussion will be the stimulus for students' original writing and appreciative sharing.

PRISCILLA HOWE

Visiting Artist

December 4-7, 2023

January 31 - February 2, 2024

STORYTELLER'S CHOICE

Target Grades: All grades, tailored to the audience

Time: 30 - 45 minutes

Capacity: 200

Curricular Connections: Prediction sequencing, writing, listening, language arts, social studies, character education

Room Requirements: Classroom or gym with students seated on floor or at desks

Whether she's telling world folktales, stories from books, or her own stories with a twist, Priscilla Howe's interactive storytelling performances engage the audience completely. Upper elementary and middle school students fall into a story-listening trance, while younger kinesthetic learners join in on hand motions, songs, and chants. Priscilla's hand puppets come along for the ride with the younger listeners. Students often leave the session repeating lines from the stories or acting them out--and teachers report hearing the stories from students for the next week

STORYTELLING, STORY WRITING WORKSHOP

Target Grades: 4 - 6

Time: 45 minutes

Capacity: 30

Curricular Connections: Prediction sequencing, writing, listening, English language arts

Materials: Pencil, paper

Room Requirements: Standard classroom (with students seated at desks).

Storytelling is a perfect lead-in to creative writing. In this highly participatory workshop, storyteller Priscilla Howe introduces concepts such as the difference between oral and written stories, story structure, and backstory. With an open and good-natured attitude, she guides the students in writing exercises to flex and stretch their creative muscles.



KINDNESS, COMPASSION, AND COURAGE: STORIES FOR CHARACTER EDUCATION

Target Grades: K - 6

Time: 30 - 45 minutes

Capacity: 200

Curricular Connections: Reading, language arts, character education, social-emotional and character development

Room Requirements: Classroom or gym

These stories highlight character traits such as kindness, courage, respect, and more. After the stories, Priscilla invites listeners to reflect on the traits and how those traits might manifest in their own lives.

HUASCAR MEDINA, POET LAUREATE EMERITUS OF KANSAS

Visiting Artist

November 1-2, 2023

TRUTH TO EMPATHY

Target Grades: 8 - 12

Time: 60-90 minutes

Capacity: 35

Curricular Connections: Speaking and listening, reading: informational, social-emotional and character development

Materials: pencil & paper

Room Requirements: Standard Classroom, smartboard/projector screen

Writers will explore voice, authenticity, truth, and empathy in an emotionally intense guided writing exercise geared towards self-examination, humility, vulnerability and compassion for self and others. We will discuss the separation between author, poetic voice, and audience. Be prepared to be open, listen deeply, and speak freely.



DJ CORCHIN

Visiting Artist

October 24-25, 2023

I FEEL...

Target Grades: K - 3

Time: 45 minutes

Capacity: 45

Curricular Connections: Social-emotional & character development, reading: information, speaking and listening.

Materials: Paper, place to write/draw, colored marker or sharpie.

Room Requirements: Standard classroom (with students seated on floor)

The **I Feel...** series helps children recognize, express, and deal with the roller coaster of emotions they feel every day. Join the author as he leads the class through activities using the books as a tool to help children develop self-awareness about their feelings and those of their friends. With fun, witty illustrations and simple, straightforward text, the **I Feel...** series helps kids understand that we all have feelings—and that is okay!



A THOUSAND NO'S

Target Grades: 4 - 6

Time: 45 minutes

Capacity: 45

Curricular Connections: Social-emotional & character development, reading: literature, speaking and listening, reading: foundational skills.

Materials: Paper, place to write/draw, colored marker or sharpie.

Room Requirements: Standard Classroom, smartboard/projector screen.

There was a little girl who had a great idea. She had the most amazing, superb, best idea ever! NO? Wait, what do you mean NO? NO again? A Thousand NO's is a story about perseverance and innovation. Students will get to see how perseverance, collaboration, and using a little imagination, can turn all those NO's into the building blocks for the biggest YES ever.



SALINA PUBLIC LIBRARY

SALINA PUBLIC LIBRARY

301 W. Elm St. • Salina, KS 67401
785-825-4624 • <https://salinapubliclibrary.org/>

EDUCATOR CARDS

Salina Public Library offers a library card specifically for educators that allows them to supplement their curriculum with an abundant, ever-changing supply of books at varying reading levels. Teachers can create temporary classroom collections, check out content, and reserve multiple copies from the library's collection. The cardholder will not incur overdue fines.

THE LIBRARY'S COLLECTION

The library has a dynamic collection of print and digital books, music, movies, and TV series, as well as video games, hotspots, research databases, and online learning resources. The collection covers a wide range of topics from literature to history to science to art. Purchasing suggestions are welcome, and staff are happy to help with book lists.

KANOPI

Salina Public Library now offers a growing selection of nearly 30,000 thought-provoking and entertaining movies, documentaries, and series from Kanopy, including videos to enhance your curricula in all academic subject areas. These videos are absolutely free to anyone with a public library card. Visit salinapubliclibrary.org/kanopy to get started.

TOURS & VISITS

Tours or instruction that highlight the library's print and electronic resources are available to groups or individuals. Staff are available to visit schools to share information about library resources.



HOME OF THE CROSSROADS CAR EXPERIENCE
KCOA MUSEUM & HALL OF FAME

THE GARAGE

134 S Fourth Street • thegaragesalina.org

Visit the new 40,000 sq. ft. garage in downtown Salina to explore The Garage's rotating collection of artifacts and learn stories of American innovation. Explore. Imagine. Create.



**KANSAS
WESLEYAN**
UNIVERSITY

KANSAS WESLEYAN UNIVERSITY

100 E. Claflin Ave. • Salina, KS 67401

785-827-5541 • kwu.edu

Barbara Marshall Nickell, Chair of the Division of Fine Arts
bmarsh@kwu.edu

Through educational outreach and seasonal programming, the KWU Division of Fine Arts shares with the Salina community a passion for learning and the responsibility of knowledge.

The Theatre Arts Program in the Department of Communication Studies and Theatre Arts offers concentrations in Theatre and Music Theatre. Students and professors are active participants in the larger theatre community, not only in Salina, but in other cities and various organizations in Kansas.

The Art and Design Department connects with the community through free gallery exhibits and discussions. It also provides professional art, design, and photography services. Students have provided logos, business cards, and flyers for area businesses and individuals.

Vocal and Instrumental Music faculty and students provide KWU Music Learning Day, jazz and band festivals, and outreach concerts for care homes and area churches. In addition, vocal, band, orchestra, and jazz concerts are free to the public. All areas of Fine Arts at KWU have enjoyed hosting interns from area high schools. Contact the Chair of the Division of Fine Arts, Barbara Marshall Nickell, bmarsh@kwu.edu for more information.



SALINA STRINGS DAY

February 5-9, 2024

Kansas Wesleyan University holds a week dedicated to furthering education and strengthening connections amongst the string community in Salina. Dr. Leonardo Rosario of KWU will join a special guest artist as they give hands-on instruction at four local schools and the Salina Youth Symphony. The week concludes with a collaborative concert between some participating schools and the KWU string orchestra featuring a combined performance.

COMMUNITY CULTURAL OFFERINGS



STIEFEL THEATRE FOR THE PERFORMING ARTS

151 S. Santa Fe • 785-827-1998 • stiefeltheatre.org
M-F, 12pm - 5pm or three hours before weekend show times.

Contact: Jane Gates
jgates@stiefeltheatre.org

The Stiefel Theatre presents over 40 concerts annually, most of which are touring nationally and internationally. The Stiefel is committed to celebrating many genres, and works to provide a platform for diverse music and entertainment that is welcoming to all. The Mike Finnigan School of Music at the Stiefel offers group music classes in guitar, piano, and voice. The Salina Symphony also makes their home at the Stiefel Theatre. For more information, please go to: www.stiefeltheatre.org.



SALINA ARTS & HUMANITIES

Contact Salina Arts & Humanities
Phone: 785-309-5770
Email: sah@salina.org
Website: <http://salinaarts.com/>

CULTURAL COMMUNITY WEBSITE -

<http://salinaarts.com/>
The SAH website features a link to the Salina Arts & Entertainment Calendar (salinaae.com), a gallery of local public art, and an extensive list of area arts and cultural organizations, galleries, and other arts resources.

HORIZONS GRANTS

The Horizons Grants Program is a project of The Salina Arts & Humanities Foundation, offering support to local cultural and service agencies and artists through a variety of grant categories. Grants offered are:

- Lana Jordan Developing Artist Grants
- Organizational Project Grants
- Enrichment Grants

Grants are available to those residing in Saline County for at least one year and to non-profit agencies. Guidelines and applications are available online.

CREATIVE CONNECTIONS

A biweekly e-newsletter dedicated to creatives featuring exhibition, performance, employment, professional development, and cultural opportunities.

SALINA ARTS & HUMANITIES RESOURCES

SMOKY HILL RIVER FESTIVAL

Salina's flagship arts celebration brings 60,000 people to Oakdale Park each June. The Festival features national, regional, local, and student performers, a highly ranked Fine Art and Craft Show, Artyopolis, regional food, and more for all ages. Volunteers of all ages are welcome to help produce this vibrant and unique community event. The Smoky Hill River Festival is a project of Salina Arts & Humanities.

June 13-16, 2024

SPRING POETRY SERIES - Tuesdays in April

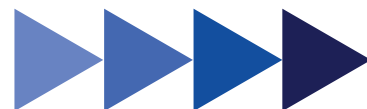
The Spring Poetry Series celebrates National Poetry Month by presenting poets of national, regional, and emerging status. Scholarships are available through SAH to facilitate student attendance. Poets are available for classroom visits throughout the month of April.

COMMUNITY PROGRAMS AND SERVICES

SAH provides a variety of services to the general community, including arts advocacy, assistance in locating artists or resources, and in its role as the arts and cultural department of the City of Salina.

THE CULTURAL ROUNDTABLE

The Cultural Roundtable is a consortium of local museums, libraries, galleries, educational institutions, performance, and service organizations. They collaborate to schedule and promote programs, exhibits, and activities of interest to Salina residents and visitors.



COMMUNITY ART AND DESIGN (CAD) COMMITTEE

Salina Arts & Humanities (SAH) helps bring public art to Salina. Alongside SAH, the CAD Committee plays a vital role in the process of creating Public Art. Its mayoral-appointed membership consists of at-large community members as well as others who bring specific art experience and knowledge to the group.

Creating a piece of public art requires teamwork. On each project, SAH works with the CAD Committee and a Site Committee comprised of a cross-section of community members and stakeholders.

The creation of this advisory group was initiated by a citizen-driven desire to create a public art program. CAD assists SAH staff in facilitating the program and implementing the City's Community Art and Design Policy for all public artworks installed on public property. CAD also supports community education, project awareness, marketing of the program, and resource assistance.

PUBLIC ART IS MEANT TO BE:

- Rewarding! It provides an opportunity for people to see the world around them in a new way.
- Diverse! It can include murals, sculptures, memorials, and more.
- Transformative! It improves the quality of life and inspires conversation.
- Reflective! Great public art reflects the community for which it is created.

The next time you look at a piece of Salina's public art, ask yourself the following questions:

- How does public art make you feel when you see it?
- What aspects of the artwork reflect either the place or the people of Salina?
- If you were to create a piece of public art for Salina, what would it be? Where would you put it and why?

For more information and maps of the public art in Salina, go to the webpage <https://www.salinaarts.com/public-art/>

SAH staff welcomes the opportunity to present a program highlighting the importance of public art and the inclusive process leading to its creation in Salina and regionally. To schedule, contact sah@salina.org or call 785-309-5770.

PUBLIC ART IN SALINA, KS

MURAL REVEAL!

YOU'VE SEEN THE TEXTURES AND COLORS OF THE MURALS THROUGHOUT THE GUIDE - NOW SEE THEM IN THEIR ENTIRETY. EACH OF THESE MURALS WERE PAINTED IN OCTOBER 2022 AND ARE ON DISPLAY IN SALINA. VISIT THE MURALS IN PERSON TOO!

TELMOMIEL

2022 BOOM! Salina Mural by Dutch artistic duo TelmoMiel. Located at Campbell Plaza 126 S Sante Fe Ave.



MONA CARON

2022 BOOM! Salina Mural by Swiss-born, San Francisco-based artist, Mona Caron. Located near Strand Plaza 118 S Sante Fe Ave.



MANTRA

2022 BOOM! Salina Mural by French artist, Yuri Cansell aka Mantra. Located in Strand Plaza 118 S Sante Fe Ave.

BOOM! Salina celebrated its first annual mural festival in the heart of downtown Salina, KS in October 2022. The festival is funded through private and crowd sourced donors that share a creative hunger to be bold and inspiring. BOOM! Salina is backed by the Salina Kanvas Project. To learn more about the Salina Kanvas Project, visit kanvasproject.com. Learn about BOOM! Salina 2023 by visiting boomsalina.art.



Arts Infusion

PRESENTED BY
**SALINA ARTS
& HUMANITIES**

a department of the City of Salina
in partnership with USD 305



**SALINA
ARTS**
& HUMANITIES



Content written by Sarah Keck, SAH staff, teaching artists, and community cultural agencies.

Design and printing by Consolidated Printing.

SALINA ARTS & HUMANITIES

211 W. Iron (Second Floor)

PO Box 2181 • Salina, KS 67402-2181

Phone 785-309-5770 • Fax 785-826-7444

Email: sah@salina.org • <http://salinaarts.com/>

STAFF:

Brad Anderson • Executive Director

Sarah Keck • Arts Education Coordinator

Anna Pauscher Morawitz • Operations & Development Manager

Crystal Hammerschmidt • Arts Services Coordinator

Amanda Morris • Office Administrator

Susan Eberwein • Program Assistant

Glenda Johnson • Accounting Technician